



INTEGRATED SOLUTIONS
FOR THE CLEANING INDUSTRY



 **amer**

 **nsm**

 **italsea**

 **sir**

A GLOBAL GROUP



Amer Group is a global enterprise with 6 manufacturing facilities throughout northern Italy, Switzerland and Germany. 3 well-integrated branches provide sales, distribution & after-sales support around the world.

This network has been growing for 40 years, thanks to our commitment, to small daily improvements and especially to the strategic choice to reinvest our profits in Research & Development and facilities.

Our comprehensive custom solutions, such as **generators, electronic control systems, DC motors, traction and linear motion systems**, have been developed to carefully satisfy our international partners' needs.

Thanks to them, and to a tight-knit team that shares the company vision, we have become an important key player and a worldwide point of reference.

Many people talk about innovation, but only a few can claim to be really innovative.



Francesco Battistella, Chairman - AMER S.p.A.

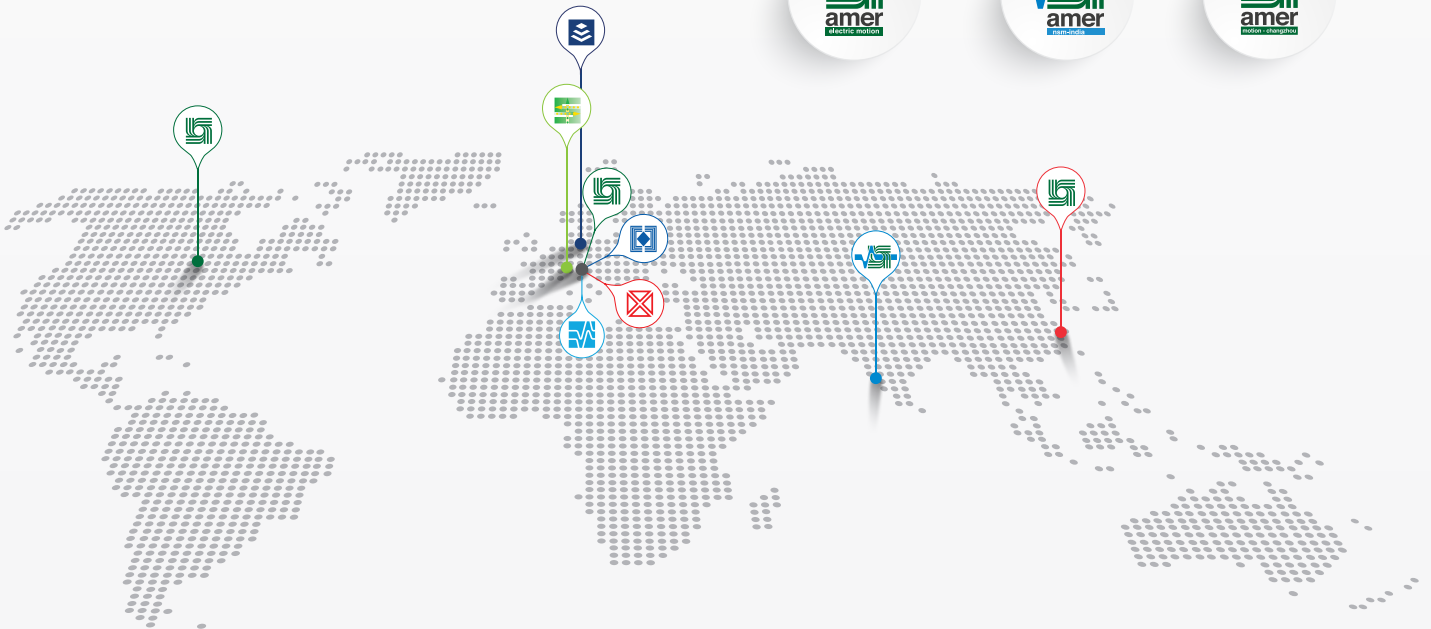


OUR PRESENCE



MANUFACTURING FACILITIES

WORLDWIDE DISTRIBUTION, TECHNICAL SUPPORT

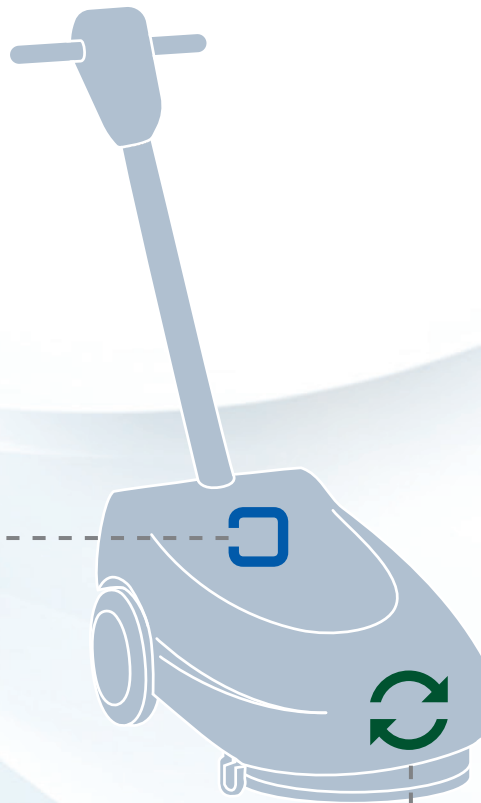


INSIDE THE LIGHT CLEANING MACHINE



FUNCTION CONTROL

Complete integrated function control card.



GEAR MOTOR FOR BRUSH

The most compact and lightweight motor for brush deck.





INSIDE THE CLEANING MACHINE



TOUCH SCREEN OPERATOR INTERFACE



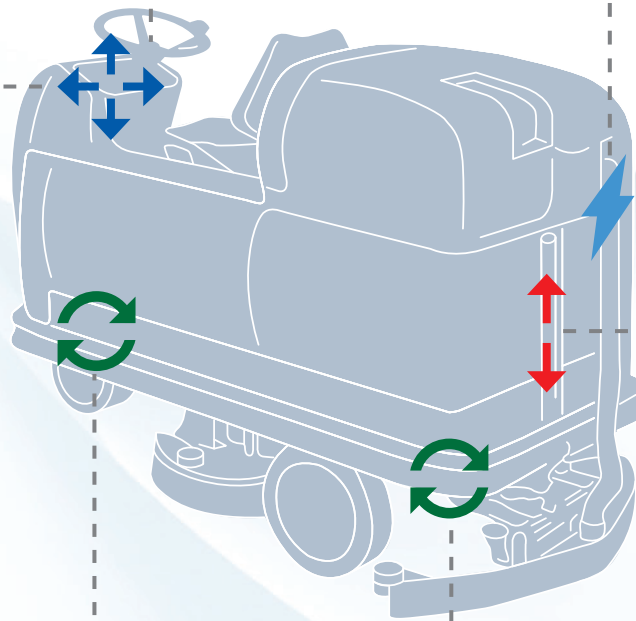
PMG-DC PERMANENT MAGNET GENERATOR

Ultra small design, super compact and light but robust, high efficiency (up to 90%).



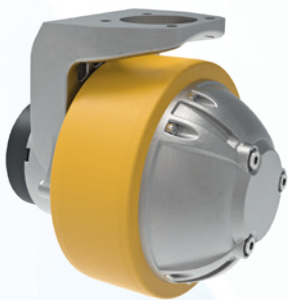
FUNCTIONS/ TRACTION CONTROLLER

Fully integrated control for cleaning machine.



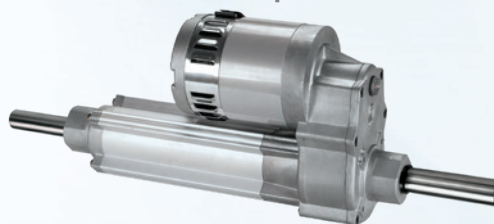
RAMB-01 TOWING HITCH

Linear actuator with compact dimensions, and integrated end stroke switches. Up to 32 mm/sec.



MTR11 DRIVE WHEEL

Reinforced, heavy-duty design. Excellent efficiency, leading to reduced pit-stop time.



MRP9D TRACTION SYSTEM

Custom hub and width, X-coil technology for max performance capability. Low-wear gears for heavy duty usage.



INSIDE THE AUTONOMOUS CLEANING MACHINE



FUNCTION CONTROL

Custom keyboard with integrated function control card.



CHOPPER

Complete range for 1 or 4 quadrant controller for PM, DC motors.



BRUSH GEARMOTOR

High performance, long brush life, noiseless.



LINEAR ACTUATOR

The ideal meeting point between convenience and reliability.



LINEAR ACTUATOR

The fastest reliable solution for squeegee application.



TRACTION SYSTEM

Custom hub and width, X-coil technology for max performance capability. Low-wear gears for heavy duty usage.



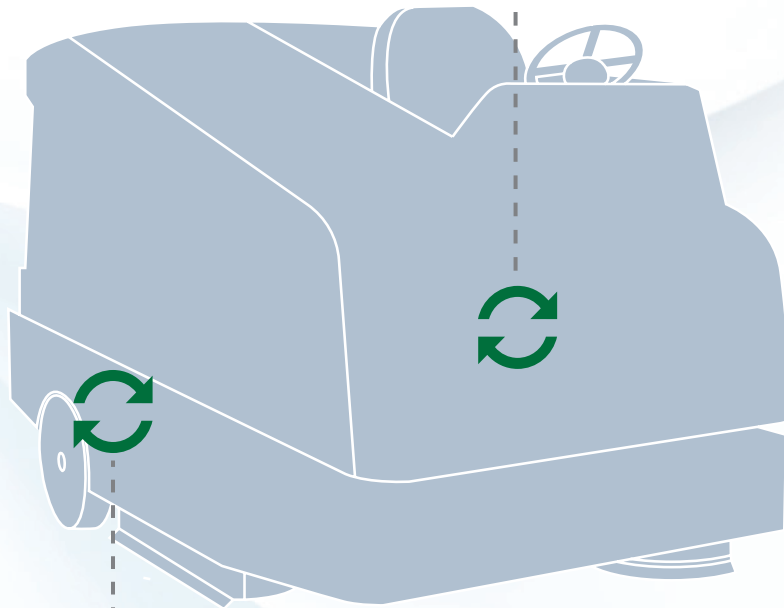


INSIDE THE POWER STEERING



DC GEAR MOTOR

Prompt, soft and accurate power steering



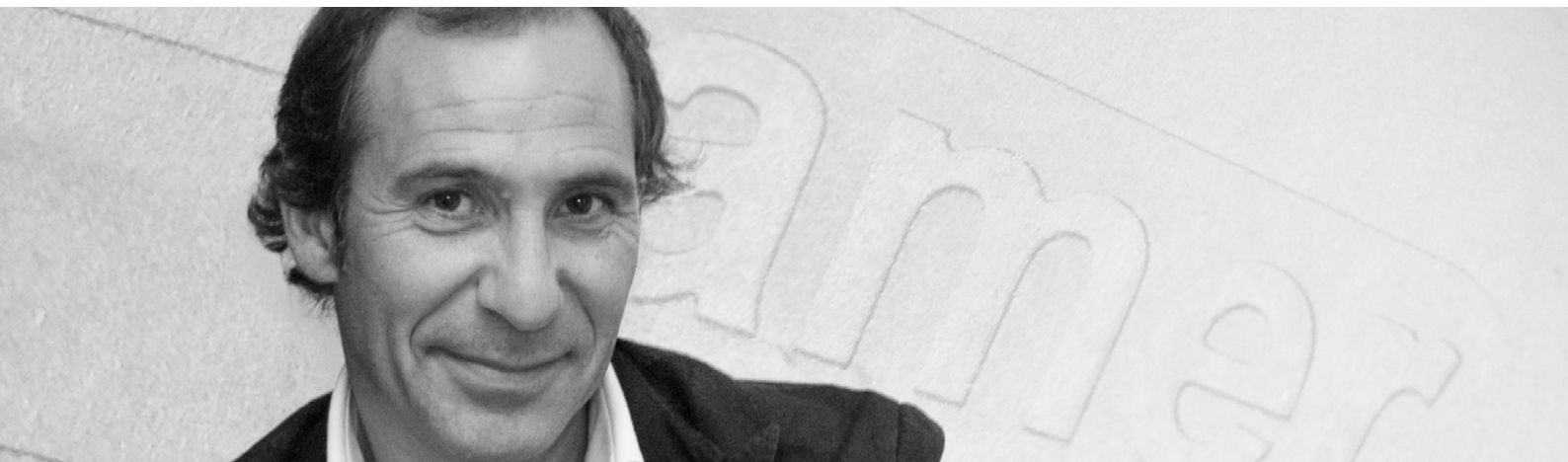
PM 45AMP STEERING CONTROLLER



MTR11 250 DRIVE WHEEL WITH STEERING SYSTEM

High efficiency
plug-in solution
fine tune positioning.





THE VALUE OF **PEOPLE** BEHIND THE PRODUCT.

Today we talk about the world, borders have no sense anymore.

Being a leader in the global market means to be present where the market calls, prepared to satisfy customer requirements, with people able to solve needs at 360 degrees.

To make this happen, to get the best results, you need to work in Team.

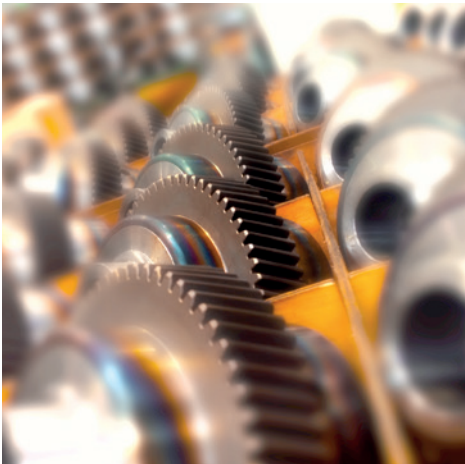
Behind every Amer product, every goal, there is the energy and the work of a group of people prepared to face, at their best, the challenges that the market offers.

Lorenzo Venegoni
Export Manager - AMER S.p.A.



ALL IN ONE HAND

Every single component is developed and double checked within the Group. From copper to packaging, from assembly to final test. On all our motors, gearmotors and traction solutions, we are able to maintain the **highest quality standards**, to meet our customers' expectations.



CUSTOM AS A STANDARD

AMER is a dynamic company that develops out-of-standard and customized solutions. Thanks to a high skilled professional team, our projects are developed in co-design with the customers, to guarantee high quality results. We deliver a **different approach** for the solution: our components can be modified according to your needs, you don't need to modify your product to install ours!



R&D, OUR DAILY BUSINESS

A strong focus on research and continuous investments in technology, allow us to be one step ahead. This makes AMER an attractive partner for Companies trying to undertake new projects in all market applications. At AMER we don't only think about R&D, we work together within the Companies of the Group, to provide seamlessly integrated solutions to all our partners.

It's a matter of **teamwork!**
Are you ready for new challenges?



DELIVERY AS A NEW START

Every production phase, from the design and selection of materials through to manufacture and after-sales assistance, complies with the strictest international and organization standards. The delivery of the finished product is just the beginning of a new work-in-progress!

100% MADE IN ITALY



Amer Headquarters



Italsea Headquarters



Sir Headquarters



Nsm Headquarters

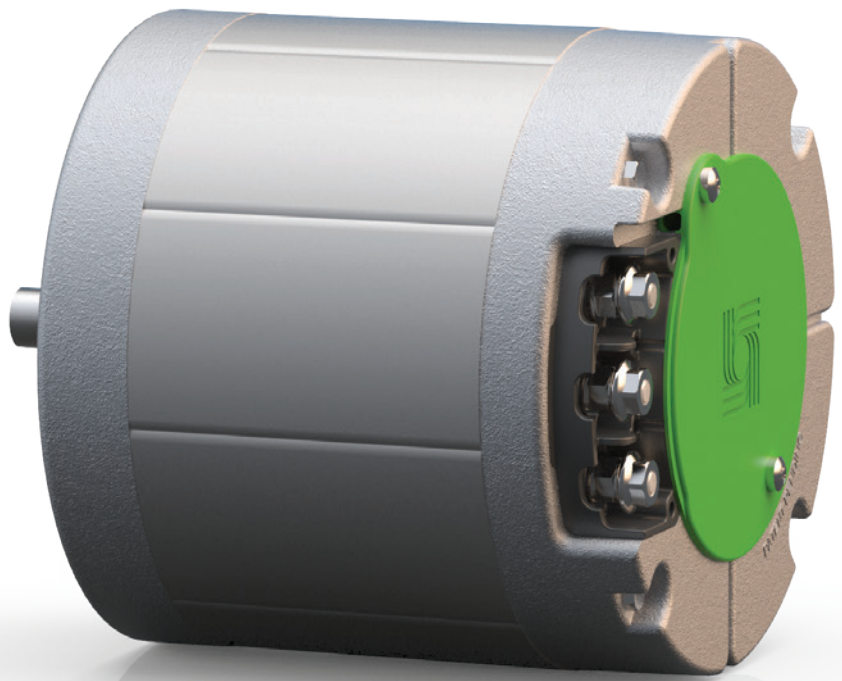


Schumo Headquarters



SIMPLY BRUSHLESS

AMER BLS Efficiency Rating



DID YOU KNOW:

The high efficiency of an electric motor allows you to reduce the battery-pack size, increasing the working hours, reducing pit-stops?

Our new BLS technology, available on the entire product range, allows new approaches to your R&D, thus giving new opportunities to machine developers.

Energetic class matters to us!



AMER S.p.A. Via Maestri del Lavoro, 1
36078 Valdagno | Vicenza | Italia

T +39 0445 400200
F +39 0445 431237

amer@amer.it
amer.it



amergroup.it