

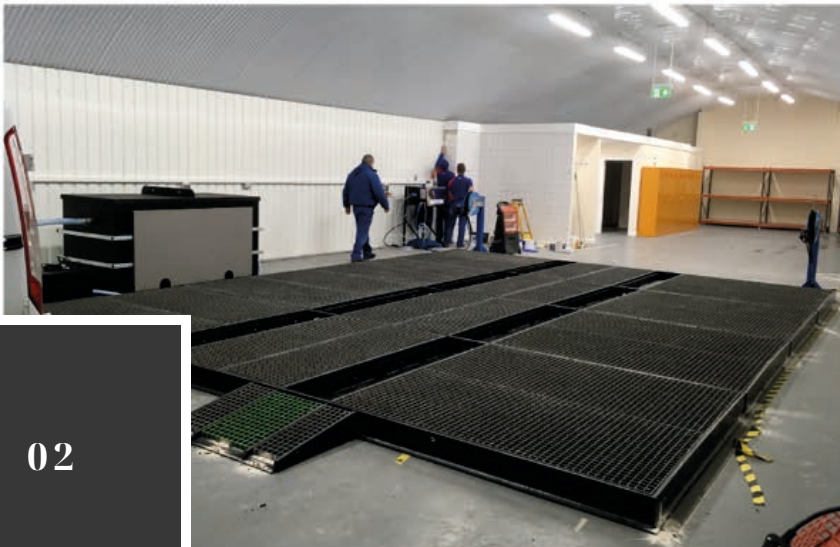


Here's what we do...

**PRODUCT BROCHURE**



With over 70 years combined industry knowledge, we strive to provide our clients with innovative and cost-effective industrial cleaning solutions. Our wide range of innovative products and systems cater for all sectors worldwide including: Healthcare, Pharmaceutical, Environmental, Agricultural, Food, Shipping, Transport, Local Government, Automotive, Manufacturing, Construction, Export and more.



## Contents

Company Overview	2
Contents	3
Surface Mounted Wash Pads	4
Traditional Separators and Groundworks	5
Trailer Mounted Bin Wash Equipment	6
Healthcare and Food Industry Bin Sanitisation	7
Automated Container Wash Equipment	8
Low Flow Water Saving and Innovation	9
Industrial Floor Sweepers	10
Industrial Scrubber Dryers	11
Pressure Washers	12
Ultra-High, Saltwater & Demin Pressure Washers & Jetting	13
Industrial Vacuum Cleaners	14
Litter Collectors and Compressed Air Vacs	15
Vehicle Wash Screens and Canopies	16
Sanitisation, Hygiene and Graffiti	17
Water Treatment, Reclaim and Separators	18
Semi-Permanent and Inflatable Wash Pads	19
Non-Explosive and ATEX	20
About Us	21
Showcase	22
References and Links	23
Contact Details	24

**Morclean provide, install & maintain innovative and unique surface mounted wash pads, which are typically installed with water treatment systems.**

### Features

Zero excavation or groundworks, can be relocated. No dilapidation works. Manufactured from recyclable materials, moveable asset, installed in hours.

### Typically installed

Professional valeters, car dealers, service centres, and many other automotive and transportation industries.

### Complimented with

Canopies, housings and screens. Water treatment, biological treatment systems and water reclaim.

### Standards

CE marked, fully compliant to EA UK, SEPA Scotland and Wales, PPG/GPP13, plus Legislative Decree 152 UNI EN/CEE European Standards.

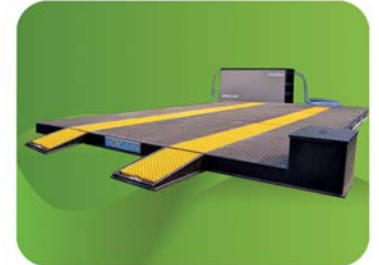
Green Apple award winner, 2020 Interclean EU Innovation Award, multiple innovation awards.



## EXCAVATION



## INNOVATION



# Vehicle Wash Systems and Groundworks



**Morclean provide separators and interceptors, along with the required excavation, installation and civil works to install them.**

### Typically Installed

Plant washing sites, recycling centres, airports, ports, Local Authorities, transport, distribution, and more..

### Project Scale

Projects can involve up to 100 tonnes of waste spoil being removed, and we can install 100M2 concrete bases, with up to 20CuM3 tanks, pump chambers and silt traps. Project duration can be typically 2 weeks utilising up to 100CuM3 of concrete per project.



# TRADITIONAL SEPARATORS AND GROUNDWORKS



# Wheelie Bin Cleaners



Morclean are market leaders, producing the UK's most popular and best selling mobile bin wash machine.

## Features

Multi award winning, recycles water, using only 350 litres of water per day/per 150 bins. As seen on TV, shown at all major industry exhibitions including Excel London, Manchester, Glasgow, Amsterdam. Our dealers include those found in Scotland, Poland, Holland, Australia, Israel, Iceland and more.

## Standards

CE marked, HAV's tested, Type Approved and compliant to EC Whole Vehicle Type Approval (ECWVTA) directive – 2007/46/EC & conforms to EA UK, SEPA Scotland and Wales, PPG/GPP13.



New Morclean  
BinWash App



TRAILER MOUNTED BIN WASH  
EQUIPMENT



## Healthcare and Food Industry Bin Sanitisation



Morclean has recently launched the new and revolutionary BinWash AUTO, alongside the fully-installed BinWash STATION. State-of-the-art technology that sanitises waste within completely safe, enclosed environments.

### BinWash AUTO

The BinWash AUTO also contains the wash water and overspray within the structure of the bin wash machine and is ideal for sensitive, medical, or hospital environments, where the overspray of contaminated water is a risk.

### BinWash STATION

The BinWash STATION is a complete cleaning station for fixed locations, where wheelie bins are generally brought back to base to be cleaned, enabling operators to manually clean the inside and outside of bins with the option of recycled or fresh water.



HEALTHCARE AND FOOD  
INDUSTRY BIN SANITISATION



New Morclean  
BinWash App



More recently, Morclean have designed and produced an automated container wash for cleaning bins of up to 1100 litres capacity.

### Features

One button operation, recycles water, available fixed, mobile, trailer or vehicle mounted.

### Markets

NHS, major food manufacturers, retail and shopping centres – with our desire and determination to also be market leaders in the UK.



### Standards

CE marked, compliant to EA UK, SEPA Scotland and Wales, PPG/GPP13, plus UNI EN/CEE European Standards.







## Typical Applications

Food factories, wine making, breweries, building cleans, 'soft' washing, solvent free graffiti and paint removal, pharmaceutical, medical, conveyor systems, confectionary, etc.

**LOW FLOW WATER SAVING AND INNOVATION**

## R&D and Innovation



**Our dedicated R&D unit is where Morclean test and trial water saving innovative products.**

### Typical systems

- Low flow high pressure cleaning, where the machines use less than 20% of water normally associated with similar machines.
- ThermoSteam high temperature steam that uses less than 30% of water when compared to high pressure washing.
- e-Series steam, where we are carrying out continued R&D to power a low water volume steam cleaner only from the vehicle's 12v battery, without additional engines or power.

**Complimented with** water capture, inflatable water pads, water bunds, water reclaim.

**Standards** CE marked, HAV's tested & fully compliant, Morclean equipment added to WTL (Water Technology List) multi award winning, presented with Innovation award Excel London.



# Floor Sweepers



Our Floor Sweepers are ideal for both industrial and commercial use. Reducing time and increasing productivity. For both inside and outside use, they are available as ride-on or pedestrian, with a choice of either a petrol or electric engine.

## Small Sweepers

Our small Sweepers are the perfect tool for clearing up small and medium surfaces in both indoor and outdoor areas, making them ideal for walkways and courtyards in warehouses, workshops, garages and car parks.

## Medium Sweepers

Morclean's medium machines are ideal for medium and large surfaces, making easy work of factories, warehouses, outdoor storage facilities and many more areas that require mechanical sweeping.



## Large Sweepers

Our battery powered ride on floor sweepers are great for areas in factories, warehouses, manufacturing plants, distribution centres and car parks.



INDUSTRIAL FLOOR SWEEPERS





## Scrubber Dryers



**Morclean supply all types of floor scrubbers. From ride-on for large warehouse floors to compact, walk behind scrubber dryers for those hard to access areas.**

### Ride-On

Morclean's range of ride on scrubber dryers are ideal for thoroughly cleaning the floors of industrial and commercial premises. Ideal for cleaning warehouses, factories, building sites, production plants, shopping centres and airports,



### Walk-Behind

With a choice of electric or battery powered models, our range of push along floor scrubbers are highly manoeuvrable with simple, user-friendly controls. Perfect for cleaning car shops, sales points, retail shops, offices, kitchens, schools, hospitals, bars, gyms and restaurants

**INDUSTRIAL SCRUBBER DRYERS**

# Pressure Washers



**Industrial High-Pressure Washers** are ideal for heavy-duty use. With a compact design and easy-to-use controls, these superior machines are housed within durable fiberglass or a stainless-steel cover, and fitted to a hard-wearing chassis and frame with tires.

Available as electric, petrol, and diesel, mobile or fixed, Morclean's range of high-pressure washers can be used in a variety of industries and applications. This includes agriculture, manufacturing, construction, marine, shipping and automotive industries; and for a range of applications including cleaning and maintenance of farm machinery, tractors, and stables, silos and tanks; car washing; cleaning equipment and plant; cleaning plaster and facades; sandblasting, patio cleaning, driveway cleaning and more...



**INDUSTRIAL PRESSURE  
WASHERS**

**Morclean also provide specialist equipment and high-pressure jetters, plus machines for use with saltwater or demineralised water.**

### **UHP**

A wide range of Ultra High-Pressure Cleaners (UHP) & water jetting machines. Most commonly used to remove tough stubborn debris from surfaces or more commonly for surface preparation, paint or rust removal and cutting. We have a wide and comprehensive range of 300 bar to 3000 bar, engine or electric driven, skid, trolley, or trailer mounted.



**ULTRA HIGH, SALTWATER & DEMIN  
PRESSURE WASHERS & JETTERS**

## **Specialist High Pressure & Jetting**



### **High Pressure for use with Demin Water**

We also offer high-pressure cleaners that use Demineralised Water (Demin Water), otherwise known as Deionised Water and Pure Water. Demin water is perfect for use in a wide range of industries and environments, such as nuclear, pharmaceutical, medical, and transport.

### **High Pressure for use with Salt Water**

Morclean offer a wide range of saltwater pressure cleaners that have been built specifically for use with saltwater for industries and environments such as shipping and marine (onboard ships, boats and fishing vessels), oil platforms, offshore, gas and oil, etc.



# Industrial Vacuum Cleaners



## Dry Only or Wet Only

Capable of removing large amounts of dry waste and fine dust, our Dry Only Vacuum Cleaners are essential for large jobs in any industrial environment. While our Wet Only machine is a fully integrated submersible pump out model, allowing for continuous suction.

## Back Pack

Morclean's lightweight and ergonomically designed Back Pack is perfect for confined areas or congested environments.

## ATEX and Type H

Our ATEX rated and Type H industrial vacuum cleaners are suitable for picking up hazardous dust and debris in Gas Zone 1 and Dust Zone 21. While our hand held vacuum can be used in the removal of almost any debris\*, including glass, swarf, metal chippings, plastic particles, dust and powder.

Our range of industrial vacuum cleaners include dry only, wet and dry, back pack, ATEX, Type H, compressed air, aircraft specification and handheld cannisters.

## Wet and Dry

Industrial wet and dry vacuum cleaners are an essential piece of cleaning equipment for most industrial environments, such as factories, building sites and garages. With the ability to deal with most cleaning challenges, our extensive range of vacuum cleaners will clean up both wet and dry waste; dust, spills and even large debris.



Morclean has a revolutionary range of litter collection and compressed air vacuums in varying sizes, all powerful enough to suit the users' outdoor litter and contaminated material collecting requirements.

### Litter Collectors

Our 120 or 240 litre WheelieVac, lightweight BacVac and Trolley Vacuum are all perfect for cleaning large and inaccessible areas in schools, colleges and the Highways Agency, or music festivals, tradeshow, car boots or sporting events. From for street cleaning or cleaning large areas filled with lots of rubbish, these machines vacuum up anything from glass, leaves, cans and bottles to dog faeces and cigarette ends.



## Litter Collectors and Compressed Air Vacuums



### Compressed Air Vacuums

Our compressed Air Vacuum Cleaner range covers collection of chips, dust, liquids, or sludge; hazardous dust and debris in Gas Zone 1 and Dust Zone 21; and debris\* including glass, swarf, metal chippings, plastic particles and powder - model dependent.



LITTER COLLECTORS AND  
COMPRESSED AIR VACS

**Morclean can design, manufacture, deliver and install a comprehensive range of screens and canopies for various applications**

### **Full scope of supply**

Structures often include car, van or HGV wash bays or inspection areas. The bespoke range can be built with options of square profile plastisol sheeting, or twin wall polycarbonate. The structures are robust and practical, and can be built with additional lighting, hose reels or jet wash remote controls.

### **Features and Options**

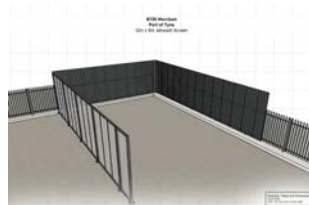
Canopies range from simple mono-pitch roofs or standard side screens, right through to our flagship



fully fitted wash bay with associated Tech Room (usually containing equipment and plant such as pumps, reclaim or jet wash), and is all fully integrated. Most made-to-measure screens are available in budget, standard or lux options.



**VEHICLE WASH SCREENS AND CANOPIES**





## Sanitising, Hygiene & Graffiti



### Thermasteam

Morclean's new ThermaSteam trailer-mounted steam cleaner is a revolutionary and unique system. Expertly designed to effortlessly remove paint, graffiti, chewing gum and more without using harmful chemicals or solvents.



Morclean supply a wide variety of hygiene cleaning equipment to solve commercial and industrial cleaning problems. Our sanitising cleaning equipment is designed to remove waste both indoors and outdoors.

### Vapour Steam

Morclean Vapour Steam Cleaners use very little water compared to our Jet Washer alternatives, which makes these products ideal for inside use, where waste water would cause an issue.

### Paint, Graffiti and Gum Removal Equipment

We have a wide range of Paint, Graffiti and Gum Removal Equipment, ranging from chemical sprayers and pressure washers as well as vapour steam cleaners which are ideal for areas where large volumes of water are not ideal.



SANITISATION, HYGIENE AND  
GRAFFITI



# Water Treatment Reclaim and Separators



**Morclean supply cost effective interceptors and separators. Our comprehensive range includes above or below ground solutions, and those used for vehicle washing, oil separation, forecourts and car parks, as well as pump chambers and pump stations.**

## Separators

From separators designed for smaller car wash bays and car valeting sites through to heavy wash silt traps for heavy wash areas, our wide range of interceptors, separators, silt traps and wash bays offer a solution to every problem, in any location.



Our comprehensive range of interceptors and separators include those used for vehicle washing, oil separation, forecourts and car parks, as follows:

- Car Wash Bay Sump Separators
- Mini Wash Bays
- Heavy Wash Silt Traps
- Heavy Duty Silt Traps
- General Use Silt Traps
- Oil Safe Separators
- Vehicle Wash Interceptors
- Wash Bay Lite
- Silt Traps Lite
- Oil Treatment Interceptors
- Overground Water Storage
- Septic Tanks
- Fuel Safe
- Car Park Bypass Separators



**WATER TREATMENT, RECLAIM  
AND SEPARATORS**

## Semi-Permanent & Inflatable Wash Pads



**Morclean offers various types of Vehicle Wash Pad Systems Including Semi-Permanent, Premium Inflatable and Basic Inflatable pads.**

The new EcoFlex Semi-Permanent Vehicle Wash Pad system is typically used in heavy-duty environments for longer periods, and is ideal for leasehold or sensitive sites, a multi-story car park, i.e. where groundworks are impractical. EcoFlex Wash Pads are exceptionally strong and durable, making them suitable for cars, motorbikes, vans, fork trucks, HGV's, shipping containers, tractors, buses and many more,

Similarly, Inflatable Vehicle Wash Pad Systems are flexible and hardwearing, but more suited for lighter use.



SEMI PERMANENT &  
INFLATABLE WASH PADS



### **EcoFlex Semi-Permanent Wash Pads**

The EcoFlex wash pad water capture system is installed quickly with minimal disturbance to the ground. This sealed, watertight wash bay bund replaces the need for traditional concrete wash pads and associated excavation works. Water is captured using a 150mm kerbed bund which can be discharged to foul or pumped to a water reclaim system.

### **Premium and Basic Inflatable Wash Pads**

The new and improved inflatable wash platform from Morclean offers clients an innovative and cost-effective solution. Taking only seconds to inflate, the floor is flexible and easy to set up and pack away and can be supplied with a drain in the corners or as a complete watertight retainer.



## ***Non-Explosive and ATEX***



Morclean also supplies general, but mostly specialist, heavy-duty industrial cleaning equipment.

### **High Pressure**

ATEX (non-explosive) high-pressure water cleaners for volatile areas such as oil, gas, solvents, food, cosmetics, etc.

### **Specialist Vacuum Cleaners**

ATEX (non-explosive) high-pressure water cleaners for volatile areas plus Type 'H' filtration typically for asbestos removal, titanium, collection of hazardous fine powders, etc.

### **General**

Our roots and where it all began! High-pressure jet wash machines and floor care equipment.



**NON-EXPLOSIVE & ATEX**



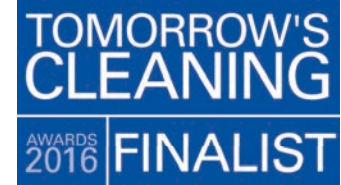


Offices in Staveley (Chesterfield) close to J29, our R&D unit situated at Markham Vale J29a with a small distribution hub in Rotterdam.

Dealers in Europe, UK wide service and installation, most mobile equipment is also exported.



# ABOUT US





Birmingham Cleaning Show 2013



Interclean Amsterdam 2014



London Cleaning Show 2015



Manchester Cleaning Show 2016



London Cleaning Show 2017



Interclean Amsterdam 2018



Manchester Cleaning Show 2019



Green Apple Award 2014/2016



Stoneleigh Expo 2021

**PAGE 4**

**Surface Mounted Wash Pad Catalogue**

<http://morclean.com/pdf/surface-mounted-wash-pad-catalogue/>

**PAGE 5**

**Project Catalogues**

[Traditional Separators and Ground Works Projects Catalogue](https://www.morclean.com/pdf/morclean-projects-catalogue/)

<https://www.morclean.com/pdf/morclean-projects-catalogue/>

**PAGE 6**

**Trailer Mounted Bin Wash Equipment**

<https://youtu.be/xInHVCyKzWg>

**PAGE 8**

**Automated Container Wash Equipment Draft video**

[https://www.youtube.com/watch?v=G6c7bjsKkso&ab\\_channel=Morclean](https://www.youtube.com/watch?v=G6c7bjsKkso&ab_channel=Morclean)

**PAGE 9**

**Low Flow Water Saving and Innovation, Solvent Free Graffiti Removal | e-Series Steam**

[https://www.youtube.com/watch?v=eSD\\_J3Mgk3w&ab\\_channel=Morclean](https://www.youtube.com/watch?v=eSD_J3Mgk3w&ab_channel=Morclean)

[https://www.youtube.com/watch?v=82yF3hv\\_ys8&ab\\_channel=Morclean](https://www.youtube.com/watch?v=82yF3hv_ys8&ab_channel=Morclean)

**PAGE 10/11**

**Scrubber Dryers and Floor Sweepers**

<https://morclean.com/pdf/scrubber-dryer-sweeper-catalogue/>

**PAGE 21/22**

**General/About Us | Our Largest Bi-Annual Event is Interclean, Europe's Largest Industry Exhibition**

[https://www.youtube.com/watch?v=GfB5ih5\\_mls&ab\\_channel=Morclean](https://www.youtube.com/watch?v=GfB5ih5_mls&ab_channel=Morclean)



## ADDRESS

Morclean Ltd  
Speedwell Industrial Estate  
Staveley, Chesterfield  
Derbyshire  
S43 3JN

## PHONE

T: +44 (0)1246 471147  
F: +44 (0)1246 471277

## EMAIL

[info@morclean.com](mailto:info@morclean.com)

# Talk to us!





