

# Washing Point



**IDROBASE®**  
PASSION FOR WATER

SCHIUMAVENTO FOAM DEVICE

NEW

G3/4" F inlet water

Detergent adjustment screw

Detergent suction hose 245cm with filter

Compressed air adjustment

Compressed air inlet

Foam outlet

Detergente Schiumogeno CONCENTRATO

(1) (2) (3) (4) (5)

No need of electricity

Power supply: compressed air

ZX.1819-FS	Schiumavento foam device complete with spray gun, 600mm lance (1) and 10m PVC hose (2)
------------	--

\*Tank not supplied with the device

Minimum pressures depending on device outlet hose

Outlet hose (optional)		Minimum pressures	
Length (m)	hose internal ø	water (bar)	air (bar)
7,5	1/2"-12,7mm	4,0	3,5
7,5	3/4"-19,0mm	3,0	3,5
15	3/4"-19,0mm	3,5	3,5

ZX.1819-CPL	Schiumavento air foam device - Full Optional complete with spray gun, 600mm lance (1) and 10m PVC hose (2), wall mount hose holder (3), lance holder floor stand (4) and tank holder (5)
-------------	--

Nickel-plated brass device body

Air/water ratio for optimal foam

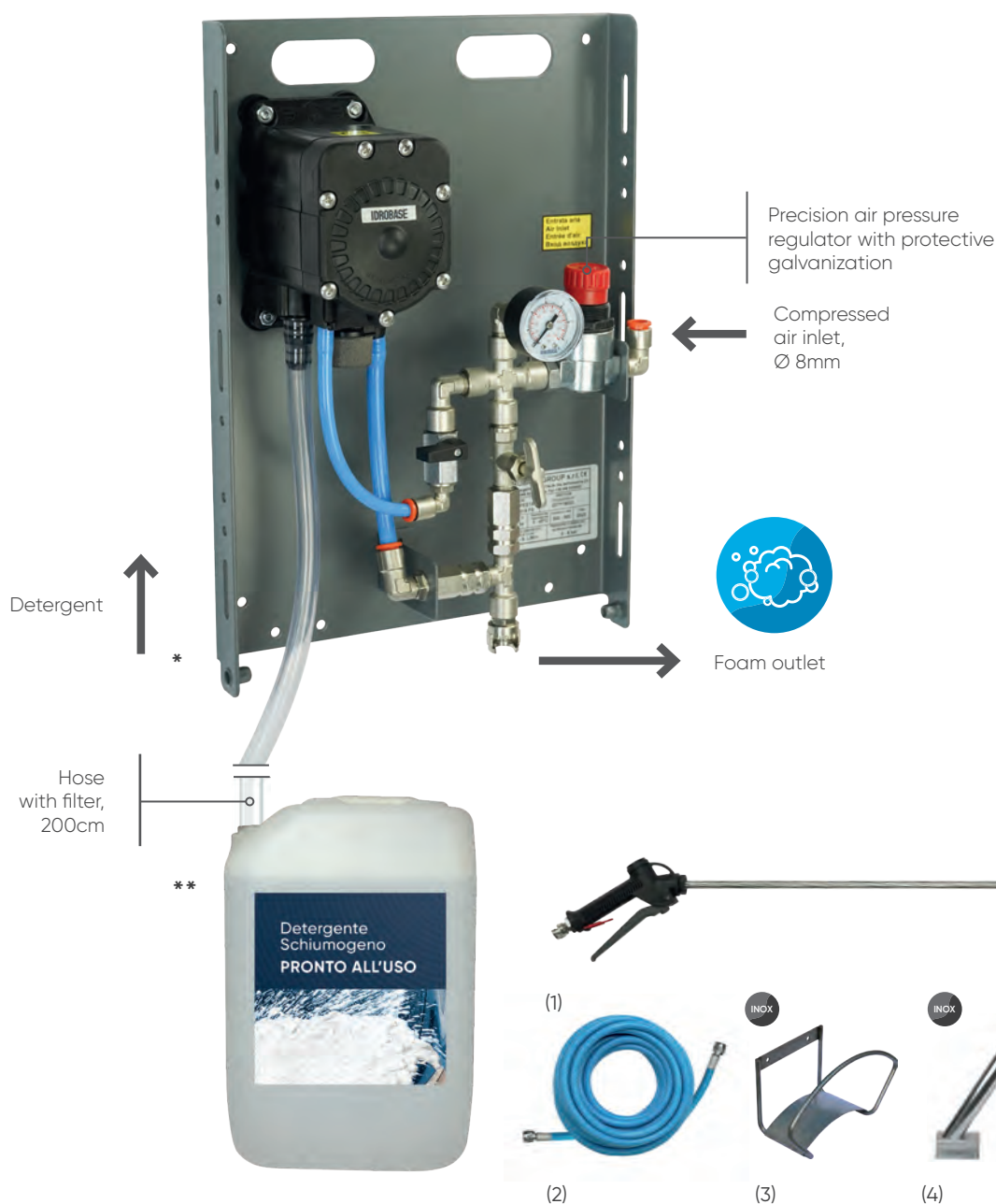
Air flow rate (m³/h)	6,0	7,0	8,0	10,5
Air pressure (bar)	3,0	3,5	4,0	5,5
Water flow rate (l/min)	5,5	6,0	6,5	7,5

-5%  
Compared to the list price of the single components



## TEMPESTA FOAM DEVICE

NEW

IDROBASE<sup>®</sup>  
PASSION FOR WATERNo need  
of electricityPower supply:  
compressed airTempesta foam device  
for car washing

ZX.0018-FS

Tempesta foam device

**Painted steel support**, pneumatic pump with double Santoprene membrane, self-priming, working pressure 4-7bar. Complete with spray gun, 600mm stainless steel lance (1) and 10m PVC hose (2)

ZX.0018-CPL

Tempesta foam device - Full Optional

**Painted steel support**, pneumatic pump with double Santoprene membrane, self-priming, working pressure 4-7bar. Complete with spray gun, 600mm stainless steel lance (1) and 10m PVC hose (2), stainless steel wall mount hose holder (3), stainless steel lance holder floor stand (4) and stainless steel tank holder (5)

Compared to the list  
price of the single  
components

-5%

\*Vertical mounting of the device as shown in the photo

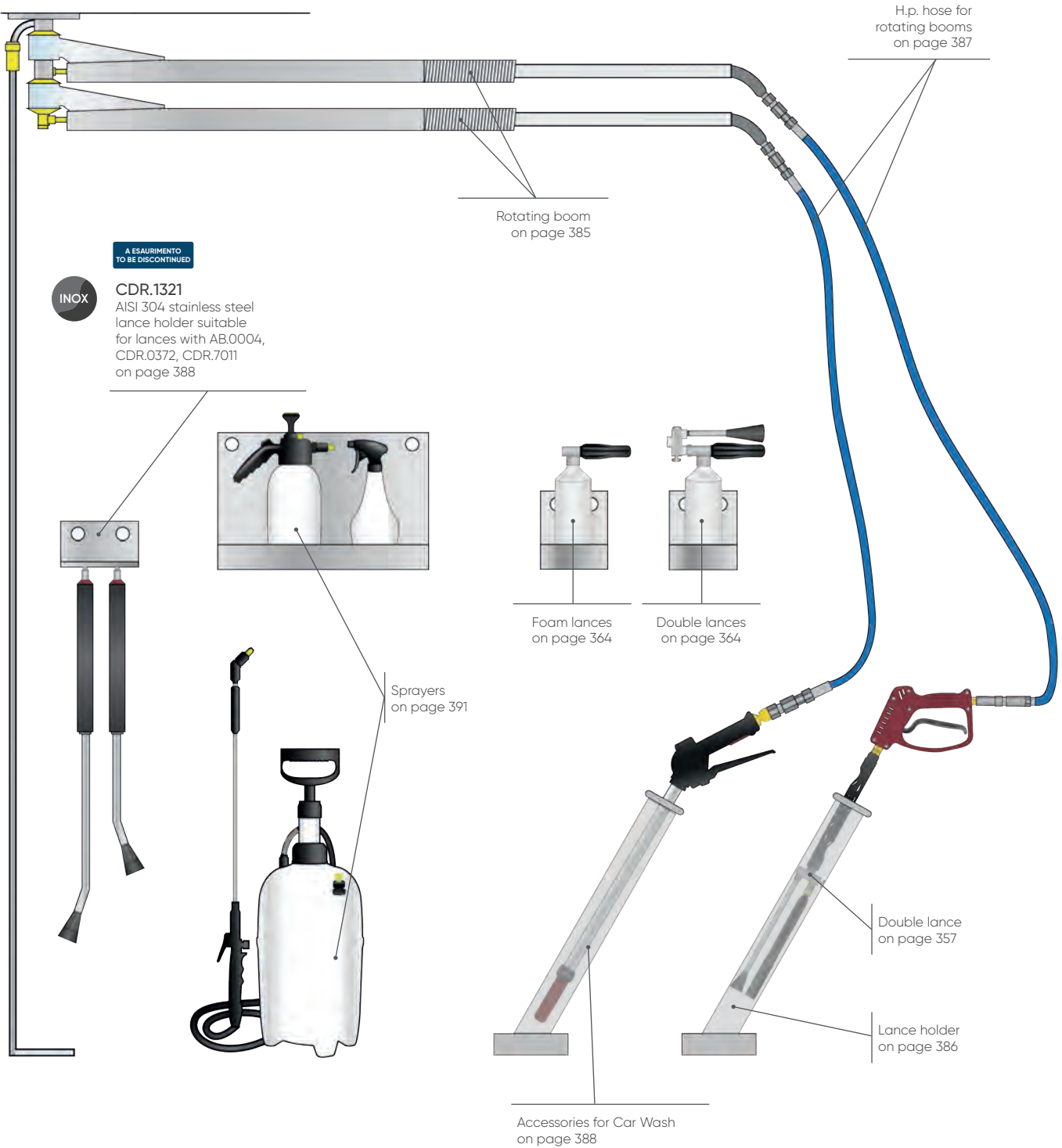
\*\*Tank not supplied with the device



# WASHING STATION

Assemble a **personalised, modular** washing station: our **Car Wash** system makes it possible to create different solutions according to the washing needs and the context where the system is located.

No Touch Car Wash, your car wash station for contactless cleaning



ROTATING BOOMS

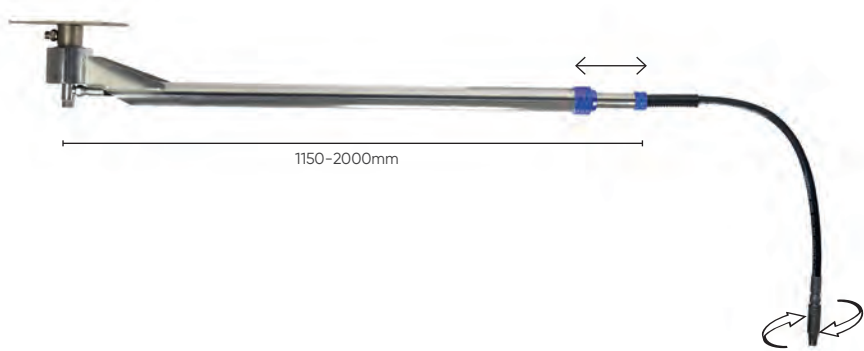
Rotating "Z" ceiling boom, made of AISI 201 stainless steel

Can not be sold in Germany



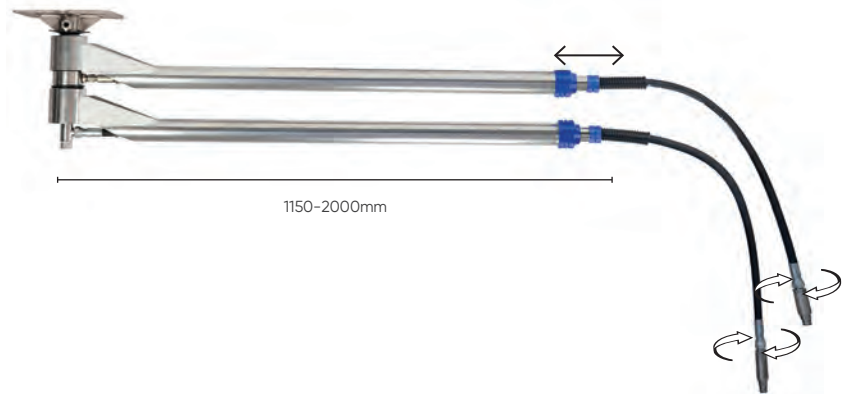
		Code	Length	Inlet	Outlet
Max pressure	220bar	<b>ZX.2670-M175</b>	1750mm	G3/8" M	G3/8" M swivel
Max temperature	90°C				

Telescopic rotating ceiling boom, made of AISI 201 stainless steel



		Code	Length	Inlet	Outlet
Max pressure	220bar	<b>ZX.2671-M175</b>	1150mm/2000mm	G3/8" M	G3/8" M swivel
Max temperature	90°C				

Double telescopic rotating ceiling boom made of AISI 201 stainless steel



		Code	Length	Inlet	Outlet
Max pressure	220bar	<b>ZX.2672-D175</b>	1150mm/2000mm	G3/8" M	G3/8" M swivel
Max temperature	90°C				

## ROTATING BOOMS AND ACCESSORIES

Flexible rotating "Z" ceiling boom made of stainless steel

Can not be sold in Germany



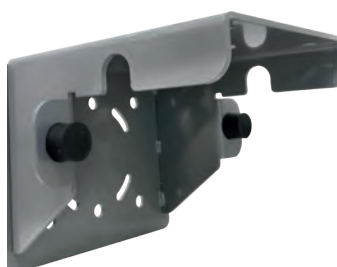
		Code	Length	Inlet	Outlet
Max pressure	200bar	<b>ZX.1700</b>	1550mm	G1/4" F	G1/4" M swivel
Max flow rate	40l/min	<b>ZX.1700-175</b>	1750mm	G1/4" F	G1/4" M swivel
Max temperature	90°C	<b>ZX.1700-200</b>	2000mm	G1/4" F	G1/4" M swivel

Flexible rotating "Z" wall boom made of stainless steel

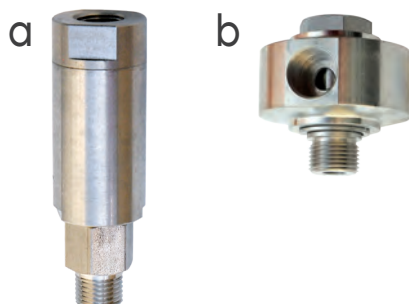
Can not be sold in Germany



		Code	Length	Inlet	Outlet
Max pressure	200bar	<b>ZX.1702</b>	1550mm	G1/4" F	G1/4" M swivel
Max flow rate	40l/min	<b>ZX.1702-175</b>	1750mm	G1/4" F	G1/4" M swivel
Max temperature	90°C	<b>ZX.1702-200</b>	2000mm	G1/4" F	G1/4" M swivel

**ZX.1701**Wall support for rotating boom,  
made of painted galvanised steel**ZX.2675**Lance holder floor stand with discharge,  
made of AISI 201 stainless steel.  
Length 730mm, Ø60mm**NEW****CDR.1436-P**Lance holder wall mount,  
made of stainless steel 700mm

## SWIVEL COUPLINGS



	Code	Inlet	Outlet	Version
a	<b>CDR.1331</b>	G1/4" F	G1/4" M	straight
a	<b>CDR.1332</b>	G3/8" F	G3/8" M	straight
b	<b>CDR.1328</b>	G1/4" M	G1/4" F	90°
b	<b>CDR.1329</b>	G3/8" M	G3/8" F	90°
b	<b>CDR.1330</b>	G1/4" M	G3/8" F	90°

**ZX.2025**  
Revision kit

for straight swivel

**ZX.2026**  
Revision kit

for 90° swivel

Straight and 90° swivel couplings,  
made of stainless steel, with stainless steel ball bearings  
lubricated with water-resistant grease to reduce friction,  
250bar, 45l/min, 160°C



## LIGHT A.P. HOSES FOR CAR WASH AND SELF-SERVICE

BLUE

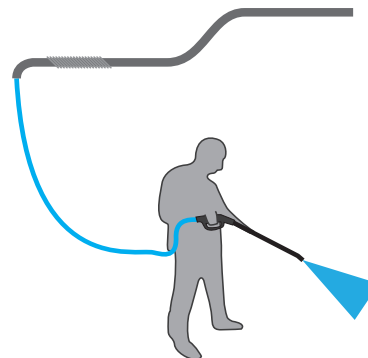


Code

Length

**ZB.SN15X**

150m



Roll not connected

## 250bar, R7 5/16" - DN8 - BLUE high pressure hose

Ideal for producing h.p. hoses for **car wash** and self-service **systems**.

Anti-abrasion and stainproof covering. Resistant to atmospheric and chemical agents. Highly resistant double synthetic braid and interior made of advanced thermoplastic material.

Hose	Braids	ø Inside	ø Outside	Working pressure	Burst pressure	Temperature	Colour
5/16"	2	8mm	14,3mm	250bar	900bar	-40°C +90°C	BLUE

DN8 - 5/16" R7 250 bar  
BLUE

G3/8" M - G1/4" F

G3/8" F - G3/8" F

ø inside 8mm  
ø outside 14,3mm  
Burst pressure 900bar  
Temperature -40°C/ 90°C



Length	Code	Code
3,5m	<b>ZB.SN035D2A1X</b>	<b>ZB.SN035D1Z1Z</b>
4m	<b>ZB.SN040D2A1X</b>	<b>ZB.SN040D1Z1Z</b>
4,5m	<b>ZB.SN045D2A1X</b>	<b>ZB.SN045D1Z1Z</b>
5m	<b>ZB.SN050D2A1X</b>	<b>ZB.SN050D1Z1Z</b>
6m	<b>ZB.SN060D2A1X</b>	<b>ZB.SN060D1Z1Z</b>
7m	<b>ZB.SN070D2A1X</b>	<b>ZB.SN070D1Z1Z</b>
10m	<b>ZB.SN100D2A1X</b>	<b>ZB.SN100D1Z1Z</b>

## Fittings

Code

Description

**CDR.1C**

Blue bend res.

**CDR.10W**Crimp  
bushing**CDR.1X**Crimp fitting  
G1/4" F

## Fittings

Code

Description

**CDR.1Z**Crimp fitting  
G3/8" F**CDR.2A**Crimp fitting  
G3/8" M**ZX.3P**Crimp fitting  
M22x1,5 F ø14  
BLACK ring nut

# CAR WASH

## ACCESSORIES

CDR.1880



Spray gun ECO1,  
inlet G3/8" F, outlet G1/4" F,  
280bar, 25l/min, 120°C

CDR.1882



Spray gun ECO1,  
inlet G3/8" F, outlet G1/4" F,  
280bar, 25l/min, 120°C

CDR.1883



Spray gun ECO1,  
inlet M22x1,5 M, outlet G1/4"  
F, 280bar, 25l/min, 120°C

CDR.1423



Aura weep gun,  
inlet G3/8" F, outlet G1/4" F,  
210bar, 25l/min, 150°C

CDR.2093



ECO1 spray gun,  
permanent weep  
inlet G3/8" F swivel  
outlet G1/4" F 280bar, 25l/  
min weeping 1,4/min at 3bar

NEW



CdR 80 lance, moulded handle, straight - outlet 1/4" NPT-F



		Code	Length	Inlet	Outlet
Max pressure	280bar	<b>ZX.7127</b>	700mm	G1/4" M	1/4" NPT-F
Max flow rate	40l/min	<b>ZX.7128</b>	900mm	G1/4" M	1/4" NPT-F
Max temperature	150°C	<b>ZX.7129</b>	1200mm	G1/4" M	1/4" NPT-F

"Sword" lance made of stainless steel for car wash - outlet 1/4" NPT-F

INOX



		Code	Length	Inlet	Outlet
Max pressure	250bar	<b>CDR.1430</b>	700mm	G1/4" M	1/4" NPT-F
Max flow rate	40l/min				
Max temperature	150°C				

CDR.1321

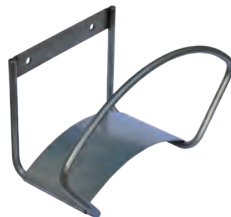
INOX



Wall mount lance holder,  
made of AISI 304 stainless steel

CDR.1296

INOX



Wall mount hose holder,  
made of AISI 304 stainless steel

CDR.1434



Car wash brush, non scratch synthetic bristles,  
G1/4" F, 5bar, 60°C, bristle length 97mm

CDR.1432

INOX



Foam injector Ø2,5mm  
for car wash brushes, made of stainless steel, inlet G1/4" F, outlet G1/4" M



UNDERBODY LANCE

Underbody rotating washing lance



Underbody rotating  
washing lance video

Nozzles

- n. 2 nozzles 1/8NPT-M
- angle 25°
- flow rate 020

The underbody rotating wash lance facilitates cleaning under vehicles: cars, trucks, agricultural machinery, heavy machinery of building and naval industry.

An efficient and time-saving undercarriage cleaning solution.

It removes road dirt, fuel and oil residues, snow sludge and salt that could corrode the metal parts of vehicles.

Ideal for high pressure washers:

- 100bar-10l/min
- 170bar-11l/min
- 200bar-13l/min
- 250bar-15l/min



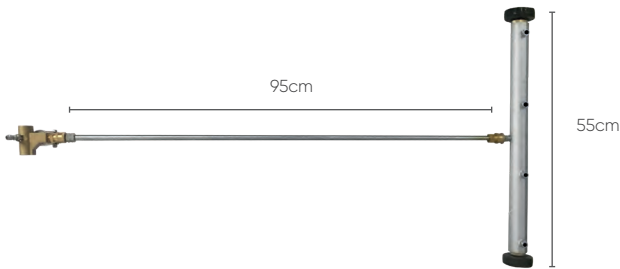
		Code	Inlet	Height	Diameter
Max pressure	275bar	ZX.2873	M22x1,5 M	1550mm	560mm
Max temperature	90°C				



# CAR WASH

## UNDERBODY LANCE

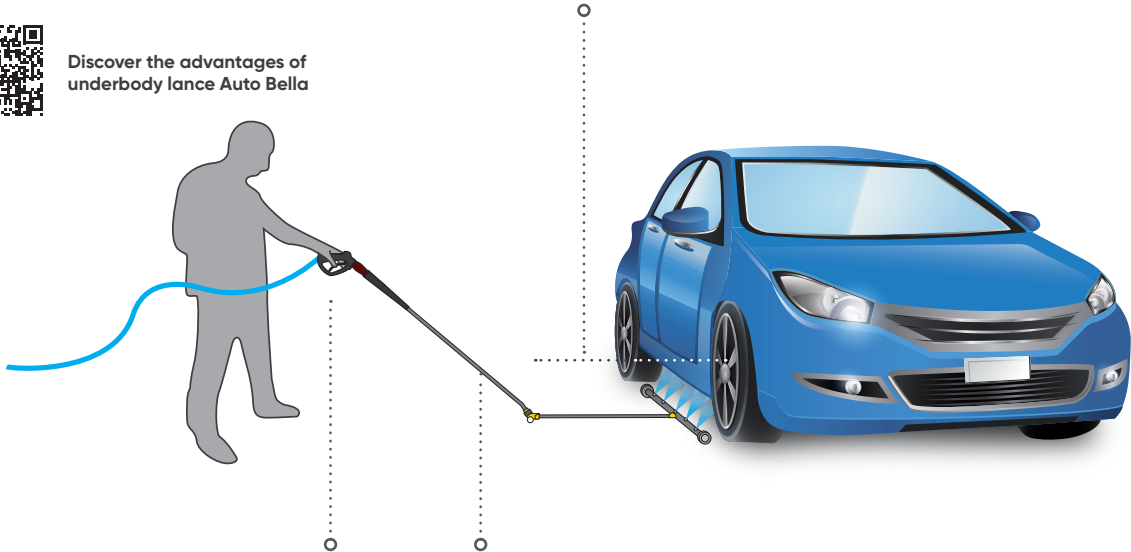
Underbody lance, inlet M connection Quick type



Lance supplied without h.p. nozzles



Discover the advantages of underbody lance Auto Bella



ZP.E4K

CdR 80 lance, moulded handle, inlet M connection KW type - Quick outlet swivel ball



Spray gun ECO1,  
inlet M22x1,5M  
outlet female swivel ball type KW  
Max pressure 220bar  
Max flow rate 25l/min



Max pressure 220bar  
Max flow rate 30l/min  
Max temperature 90°C

Pipe made in chromed steel

Code	Length	Outlet
ZU.X-C7K	700mm	Quick swivel ball
ZU.X-C9K	900mm	Quick swivel ball
ZU.X-C12K	1200mm	Quick swivel ball

Set of 4 h.p. Quick nozzles for underbody lance

Code	Flow rate	Nozzle set optimal for bar-l/min
ZX.NK-040	040	110/10 - 140/11
ZX.NK-050	050	110/11 - 150/15 - 200/15
ZX.NK-060	060	110/14 - 130/15 - 180/18
ZX.NK-070	070	150/21 - 200/22
ZX.NK-080	080	150/22 - 200/25

Adjust the jet nozzle parallel to the lance body

It is recommended to assemble the nozzles using GU.B20044 teflon tape page 286



## SPRAYERS

## A-Spruzzo Foam

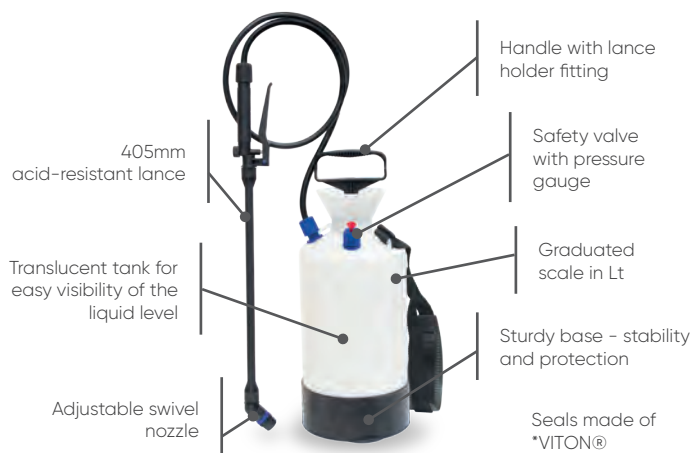
A-Spruzzo Foam 2L is ideal for alloy wheel washing in car washes, in factories, in car body shops.



Code	Capacity	Pressure range
<b>CDR.1937-20</b>	2L	2bar

## A-Spruzzo Extreme

The A-Spruzzo Extreme sprayers are designed for most heavy-duty jobs. Ideal for use in car washes to clean alloy wheels, in factories and in body shops. The acid-resistant lance and the seals made of \*VITON®, together with a tank that is highly resistant to high pressures, all guarantee the long life of the equipment.



Code	Capacity	Pressure range
<b>CDR.1930-7</b>	7L	3bar
<b>CDR.1930-10</b>	10L	3bar

## A-Spruzzo Extreme 7-10L spare parts



Code	Description	
<b>a CDR.1933</b>	Spray gun and 405mm nozzle	5
<b>b ZX.1817</b>	Lance extension 405mm	5
<b>c CDR.1934</b>	Complete swivel nozzle	5
<b>d CDR.1935</b>	Safety valve	5
<b>e CDR.1936</b>	Set of O-Rings VITON® (3 pcs)	5

## A-Spruzzo Strong

A-Spruzzo Strong 1,5 and 2L are ideal to use in car washes for cleaning alloy wheels, in factories and body shops.



Code	Capacity	Pressure range
<b>CDR.1931-20</b>	2L	2bar

## A-Spruzzo Active

The A-Spruzzo Active 0,5 and 1L are ideal for nebulising detergents formulated for car interior finishes or products for protecting seals.



Code	Capacity
<b>CDR.1932-05</b>	0,5L
<b>CDR.1932-10</b>	1L

## DOSING PUMPS

## Water powered dosing pump

Power supply:  
water

Code Dosage percentage

**CDR.1437** 0,3% - 2%**CDR.1438** 0,4% - 4%

## Dosing pump for car wash

- connection: 3/4" BSPT
- water pressure: 0,2-8bar
- flow rate: 10-2500l/h

## Material:

- Seal made of \*Viton® and O-Ring made of Aflas
- Spring made of Hastelloy, highly resistant to corrosion
- Body in polyamide reinforced with 30% fiberglass

## Features &amp; benefits:

- Extremely precise product dosing
- It works with just the water pressure
- Very easy maintenance

## Analogue dosing pump

Power supply:  
electricity

Code Seal Ideal for

**CDR.1409** \*VITON® Wax**CDR.1410** Dutral Shampoo

## Analogue dosing pump

protection rating IP65, max flow rate 4l/h at 10bar.  
Propylene housing reinforced with fiberglass, ceramic double ball valves.

## Complete with:

- Foot valve for production suction
- Injection valve
- Delivery pipe ø4x6mm
- Sucking/discharge pipe ø4x6mm

## Pneumatic dosing pump

Power supply:  
compressed air

Code Seal Ideal for

**CDR.1413** \*VITON® Wax**CDR.1414** Dutral Shampoo

## Pneumatic dosing pump,

max flow rate 4l/h at 10bar. Polypropylene housing, ceramic double ball valves, air supply pressure 6/8bar, air inlet for pipe ø6x8mm, solenoid valve 24V-50/60Hz with connector. Can be installed horizontally, on the wall, DIN rail.

## Complete with:

- Foot valve for production suction
- Injection valve
- Delivery pipe ø4x6mm
- Sucking/discharge pipe ø4x6mm



## DOSING PUMPS

## Digital dosing pump



Power supply:  
electricity



Possibile multitrack management

Code	Seal	Ideal for
<b>CDR.2100</b>	Viton®	Wax/acid
<b>CDR.2101</b>	EPDM-Dutral	Shampoo



## Digital multifunctional dosing pump

- Flow rate 20L/h at 4bar
- 230VAC, 50-60Hz, IP65
- Self-discharge pump body for chemical products which generate gas, automatic priming

## Complete with:

- Foot valve for production suction
- Injection valve
- Sucking pipe delivery and discharge

## Digital dosing pump



Power supply:  
electricity



Code	Seal	Ideal for
<b>CDR.2102</b>	Viton®	Wax/acid
<b>CDR.2103</b>	EPDM-Dutral	Shampoo



## Digital multifunctional dosing pump

- Flow rate 6L/h a 7bar, max. 180 pulses/min
- 230VAC, 50-60Hz, 16W, IP65
- Vertical pump assembly
- Equipped with level control input

## Complete with:

- Foot valve for production suction
- Injection valve
- Sucking pipe delivery and discharge

## Pulse emitter counters for dosing pumps

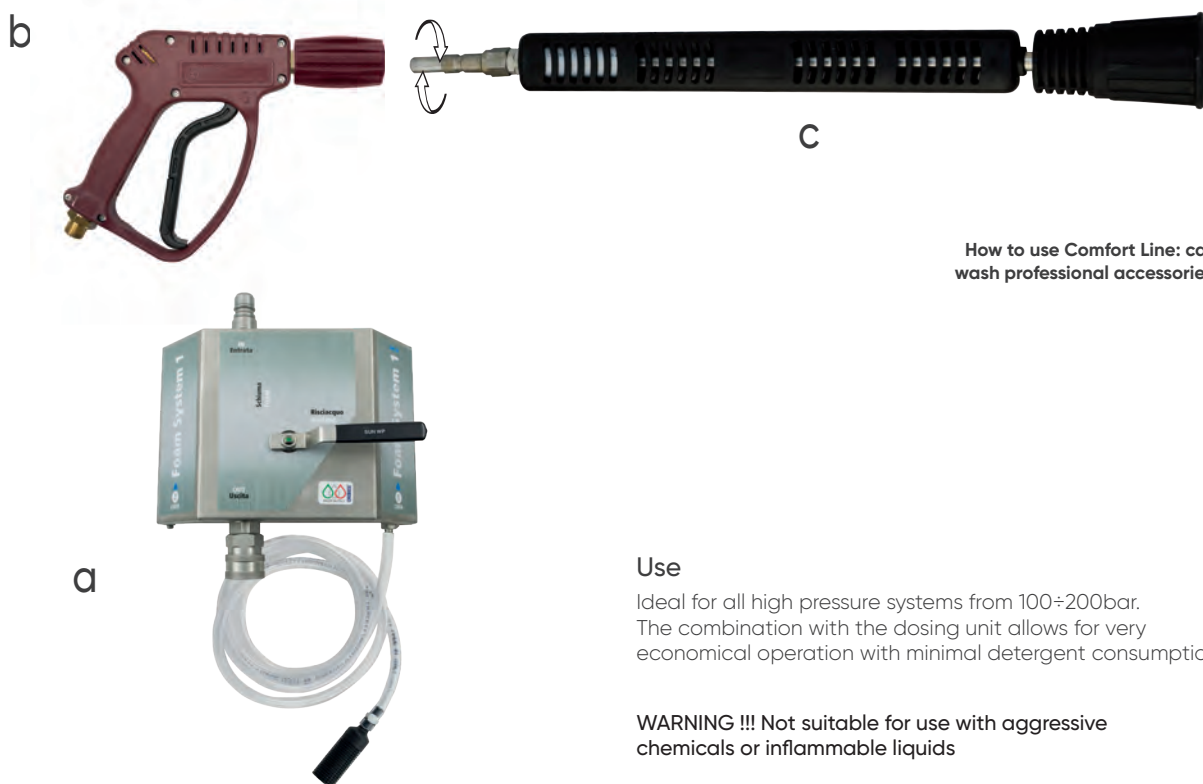


cable 2m with  
BNC connector

Code	Inlet	Outlet	Nominal flow rate	Length (L)
<b>CDR.2104-12</b>	G1/2" M	G1/2" M	1,5 m <sup>3</sup> /h	190mm
<b>CDR.2104-34</b>	G3/4" M	G3/4" M	2,5 m <sup>3</sup> /h	228mm
<b>CDR.2104-1</b>	G1 M"	G1 M"	3,5 m <sup>3</sup> /h	260mm

- Brass case and head
- Max. 16bar, 30°C
- Max. 250VAC/200VDC, 1A, 10VA

## H.P. FOAM KIT FOR FIXED HIGH PRESSURE WASHER SYSTEMS



## Use

Ideal for all high pressure systems from 100÷200bar.  
The combination with the dosing unit allows for very economical operation with minimal detergent consumption

**WARNING !!!** Not suitable for use with aggressive chemicals or inflammable liquids

## a CDR.1680

The high pressure foam device 100÷200bar is a very compact foam dispenser operating at high pressure that in combination with the foam lance makes it possible to operate very economically with minimum detergent use.

Technical features of h.p. hose to be used with high pressure foam device:

- 5/16" - max 10m length
- 3/8" - max 30m length
- **Detergent suction system:** Venturi
- **Water flow rate:** max 15l/min
- **Maximum pressure:** 200bar
- **Maximum temperature:** 95°C
- **Area treated per minute:** approx. 70m<sup>2</sup>
- **Percentage of foam detergent suctioned:** 0,1 to 10 %
- **Device dimensions:** 150 x 125 x 50mm (WxHxL)
- **Device material:** AISI 304 stainless steel
- **Venturi system material:** AISI 316 stainless steel

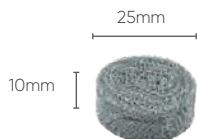
## b ZX.1410

RED50 spray gun, inlet G3/8" F, F swivel ball outlet KW type

## c ZX.1135

Stainless steel foam lance 510mm, covered in shock-proof plastic and equipped with a special device for foam production and fan spray nebulizing nozzle. Complete with M connector M KW type.

## CDR.1741



**Pressed filter,**  
stainless steel AISI 304  
for PA foam lances LS12 model



# KIT LIFE CAR



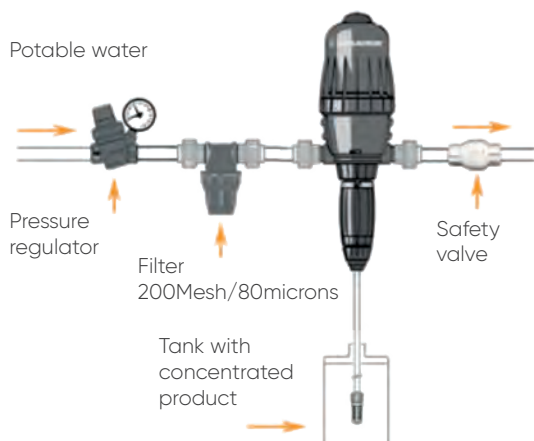
MECHANICAL  
with no need for  
electricity



## Kit Life Car

The dosing system for **Car Washes**, self-service and automatic washing, bus and truck washing.

Ideal for **introducing detergents and waxes** into the water stream for cleaning vehicle bodies, alloy wheels, motors and mechanical parts.



## Operating principle

The **Life Car** dosing system, directly connected to the water supply line, uses the water pressure to **activate the dosing system, sucks the concentrated** product and mixes it with water according to the required percentage (which can be set by the operator). The resulting solution is sent to the lines connected to the system. The Life Car dosing system is completely mechanical, guaranteeing precision and regularity.

### Technical features

Code	Model	Flow rate	Pressure	% dosing	Consumption of concentrated product
<b>ZX.1707-A</b>	Light Car	10 to 2500l/h	from 0,3 to 6bar	from 0,3 to 2	0,02 to 50l/h
<b>ZX.1708-A</b>	Extreme Car	10 to 2500l/h	from 0,3 to 6bar	from 0,4 to 4	0,1 to 125l/h

### Life Car advantages

- **The easiest and most convenient method** for professional washing
- **Reduction of personnel costs and time required**
- **Reduction of maintenance costs**
- **Extreme precision in concentrated product dosing**
- **No risk of dosing errors**
- **Less product wasted**

### Components

- **1 pressure reducer**
- **1 10" filter**, with washable cartridge 50microns + pressure gauge
- **1 dosing pump**
- **1 PVC ball valve** for line closing
- **1 suction hose for chemicals**
- **10m PVC hose**
- **1 gun with 600mm SS lance**
- **1 stainless steel nozzle, ang. 110°, flow rate 030**



## DETERGENTS AND CHEMICALS

### Lavaesterno



#### Code

#### Weight Description

<b>CDR.2051-10</b>	10kg	Detergent with an exclusive formulation for professional cleaning of car exteriors. The best synthesis of research and development applied to cleaning. Incomparable effectiveness on greasy dirt, smog, soil and oil residues
<b>CDR.2051-25</b>	25kg	

### Lavapesante



#### Code

#### Weight Description

<b>CDR.2052-10</b>	10kg	The detergent for professional deep cleaning of heavy vehicle exteriors. For effectively removing even the most stubborn dirt, without damaging the vehicle surfaces
<b>CDR.2052-25</b>	25kg	

### Lavafino



#### Code

#### Weight Description

<b>CDR.2053-10</b>	10kg	The specific formulation makes it possible to polish and protect plastic surfaces such as dashboards, bumpers, and mudguards. It is also suitable for wood and rubber surfaces
--------------------	------	--

### Lavacerchio



#### Code

#### Weight Description

<b>CDR.2054-10</b>	10kg	Concentrated detergent, effectively cleans any type of rim in aluminium and related alloys
--------------------	------	--

### Gommabella



#### Code

#### Weight Description

<b>CDR.2055-12</b>	12kg	Specially formulated detergent designed for polishing, cleaning, renewing and protecting tyres, enhancing and restoring their original appearance. For an anti-aging effect that lasts several days, protecting the tyres from hardening and cracking caused by solar radiation
--------------------	------	---

### Lavatessuto



#### Code

#### Weight Description

<b>CDR.2056-10</b>	10kg	Detergent for deep cleaning all the fabric surfaces of the car such as seats, carpets, door panels and floor mats. The specific formulation ensures excellent cleaning results with a long-lasting protectant effect on the surfaces
--------------------	------	--

### Cerabella

**NEW**


#### Code

#### Capacity Description

<b>CDR.2057-10</b>	10L	Scented wax with excellent protective properties for painted and metal surfaces. Ideal for both automatic systems with drying and self-services. It creates a water-repellent film that allows the vehicle to dry quickly, protecting painted, metal and plastic surfaces.
--------------------	-----	--



**H.P. HOSE REEL**

Painted manual  
hose reel

Code

Length

Hose

**ZX.1111****CDR.7717-15**

15m

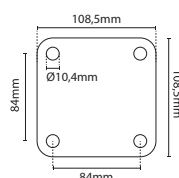
R1 3/8"

**CDR.7717-30**

30m

R1 3/8"

Systems connection hose not included.  
Inlet G3/8" M, outlet G3/8" F.  
Max pressure 250bar, 160°C.



**Manual hose reel**, made of nylon,  
inlet G3/8" M, outlet M22x1,5 M,  
200bar, 150°C

Manual hose reel  
for pipe R2 R2 ø5/16", 18m

**RA.AV1100FE****RA.ST20FE****RA.AV1100****RA.ST20**

**Automatic hose reel**,  
made of painted steel,  
inlet G1/2" M, outlet  
G1/2" M, 200bar

Automatic hose reel  
for hose ø1/2", 20m



**Swivel bracket**,  
made of painted steel,  
for automatic hose reel RA.AV1100FE



**Automatic hose reel**,  
made of AISI 316  
stainless steel, inlet G1/2" M,  
outlet G1/2" M, 200bar

Automatic hose reel  
for hose ø1/2", 20m



**Swivel bracket**,  
made of AISI 316 stainless steel,  
for automatic hose reel RA.AV1100

**RA.4961****RA.4962****RA.KIT-11****RA.KIT-10**

**Swivel coupling**,  
for painted steel automatic  
hose reel RA.AV1100FE



**Swivel coupling**,  
for AISI 316 stainless steel  
automatic hose reel RA.AV1100



**Seal ø14mm**,  
for automatic hose reel  
RA.AV1100FE and RA.AV1100

Manufactured after 01/2008  
(check seal diameter)



**Seal ø12mm**,  
for automatic hose reel  
RA.AV1100FE and RA.AV1100

Manufactured before 01/2008  
(check seal diameter)

## ENGLISH

Copyrights© to this catalogue belong to IDROBASE GROUP® Srl. Reading, reference and dissemination in paper or electronic formats for personal use are permitted. Use for commercial purposes is not permitted, nor is any type of alteration except with the written consent of IDROBASE GROUP® Srl.

This catalogue cancels and supersedes the earlier version.

This catalogue provides general information on the products supplied by IDROBASE GROUP® Srl.

It is intended for retailers, system engineers, designers and more generally, all those who are already adequately familiar with said products, the materials from which they are made, their characteristics, efficiency and operation; it is therefore not intended for consumers who, in order to handle, install or perform any operation with the goods described here, must necessarily contact qualified and skilled personnel.

Also, with regard to skilled personnel, this catalogue should be considered a mere commercial tool, not containing the necessary technical specifications - which may be obtained free of charge from Idrobase, and as such, not suitable for use as a single go-to reference tool for the design, construction or installation of any kind of system.

The illustrations, technical characteristics, functions and other information given here about individual products, systems, installations and the like are based on the current state of the art: however, only the most immediately applicable information can be reproduced here, without any consideration for the global data necessary to design, implement and install any system, which must therefore be carefully assessed by designers, system engineers and installers.

Therefore, for specific indications on all products in the catalogue, please contact our main office, where competent staff are always on hand to answer any additional queries.

All the illustrations reproduced here may be slightly different from actual products and therefore, they should simply be intended as closely representing real items.

We reserve the right to introduce changes in all the products. For this reason, too, it is advisable to directly contact our main office.

In case of doubts regarding interpretation, the original Italian text will prevail.

When a new reprint is published, the present edition will no longer be valid.



**IDROBASE®**  
PASSION FOR WATER

**Idrobase Group Srl**

Via dell'Industria, N. 25  
35010 Borgoricco (PD) Italia

T: +39 049 9335903 r.a.

[www.idrobasegroup.com](http://www.idrobasegroup.com)  
[info@idrobasegroup.com](mailto:info@idrobasegroup.com)



Recognition of maximum  
commercial reliability

