



# verso



Versa is a battery powered walk-behind scrubbing machine with automatic traction, available with 2 disc brushes with 55 or 65 cm working width.

#### THE ADVANTAGES OF VERSA

The advantages that improve the quality of the cleaning operations:

- Great working autonomy and excellent cleaning performances combined in a compact and manoeuvrable machine;
- Brush head, squeegee attachment and frame made of die-cast aluminum make the machine robust and reliable over time, as well as lightweight and comfortable both during work and transport;
- Pressure Monitoring (PM): system for monitoring the power dispensed by the brush motors, in order to guarantee maximum effectiveness on any type of flooring (upon request);
- Self-levelling splash guards, adjust automatically also to uneven floors;
- Antibacterial tanks, available upon request, are ideal for healthcare industry;
- Easy Clean: special treatment that prevents dirt from sticking on the surface, making easier tank cleaning and sanitizing (upon request).



#### MODELS

**VERSA 55 BT**  
Scrubbing version  
with two disc brushes

**VERSA 65 BT**  
Scrubbing version  
with two disc brushes

**VERSA 65 BTS**  
Sweeping version

## With resource-saving and consumption-monitoring technologies

### ECO DEVICE

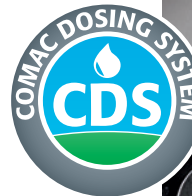
Only one button to reduce energy consumption and noise level.  
It is an ideal working setting for maintenance cleaning and to use the machine in sensitive or frequented environments.



### CDS - COMAC DOSING SYSTEM

Separate water and detergent management

Versa can be equipped upon request with CDS (Comac Dosing System) for the separate management of water and detergent, that allows to increase or reduce their flow, according to the type of dirt to clean, thus avoiding wastes.  
It reduces cleaning solution consumption by up to 50%.



### CFC - COMAC FLEET CARE

Versa can be arranged with the equipment needed for fleet management through Comac Fleet Care (CFC). Such system allows the remote control of machines status: if, when and where each machine is operating or if maintenance is needed, to let you promptly intervene avoiding machine downtimes and unexpected costs for extraordinary maintenance.

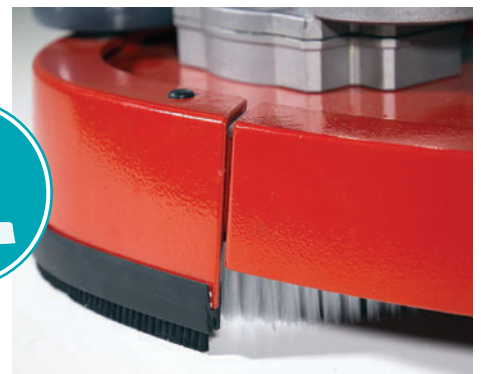


### PM - PRESSURE MONITORING

System for monitoring the pressure on the brushes

Monitors the power dispensed by the brush motors in order to guarantee maximum effectiveness on any type of flooring.

Self-levelling splash guards for better cleaning performance (Versa 55-65).



### REFERENCE SECTORS



Industrial



Cleaning companies



Health



Public



Tourism



Sports



Automotive



GDO

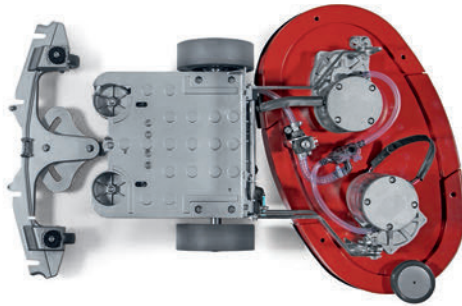


Transport



# High-quality performance on any type of flooring

**THE FRAME, THE SQUEEGEE MOUNT AND THE BRUSH HEAD ARE MADE OUT OF DIE-CAST ALUMINUM, THAT MAKES THEM ROBUST AND SHOCK PROOF**



The chain to lower the squeegee is robust, made of steel, and equipped with an ergonomic handle, made out of die-cast aluminum



The brush head is lowered/lifted through a comfortable pedal (Version without PM-Pressure Monitoring)

**EASY TO PREPARE, EASY TO USE**



The tank level is always under control, thanks to an indicator that results useful when filling the tank with water and during work, to know when you need to stop to empty the recovery tank



The hose for filling the solution tank can be connected directly to any water tap, thus allowing the machine to be quickly refilled at any location



Versa solution tank has a measuring cap that helps to add always the proper detergent amount



The recovery tank lid can hold small objects



Convenient handle for increasing or decreasing the speed based on the operational requirements. The emergency button allows to immediately stop the machine in case of emergency



The on board battery charger makes recharging easier and quicker

## VERSA'S TECHNOLOGIES



# The tools that will save your time



## FAST FILL

A simple device allows the quick filling of the tank with clean water without the presence of the operator (upon request)



## KIT FOR CLEANING ACCESSORIES

For bringing additional cleaning tools with you, which are useful for completing the operations (upon request)



## TOOL-HOLDER HOOK

It can hold the squeegee or the tank lid, useful for machine store or maintenance (upon request)



## ELASTIC NET

The elastic net can hold additional cleaning products that allows to complete the cleaning task

## PROPER DAILY MAINTENANCE KEEPS CLEANING PERFORMANCES CONSTANT OVER TIME

Yellow color-code identifies the parts involved in daily maintenance. At the end of the shift the operator can easily and quickly find what parts have to be sanitized, without wasting time

### DAILY MAINTENANCE



To ensure a perfect drying, the suction hose and the squeegee rubber blades must be cleaned at the end of any cleaning operation. The squeegee can be lifted to quickly clean the rubber blades



For an effective vacuuming the suction filter must be kept clean



Solution filter cleaning

### EXTRAORDINARY MAINTENANCE



The large diameter of the drain hose allows to quickly empty the recovery tank



Rubber blades replacement or rotation are carried out in few seconds without any tools



Full access to components makes easier both regular and extraordinary maintenance

### CERTIFICATIONS



STANDARD EQUIPMENTS	Versa 55BT	Versa 65BT	Versa 65BTS
<b>Comfort</b>			
Hour meter	•	•	•
Eco Mode	•	•	•
Electronic control panel with diagnostics	•	•	•
Brush head lifting by pedal	Manual/Auto (PM)	Manual/Auto (PM)	Manual/Auto (PM)
Ergonomic squeegee handle	•	•	•
Speed adjustment	•	•	•
Squeegee rubber blades usable on 4 sides	•	•	•
Color-coded parts for easy maintenance	•	•	•
Accessory holder on the tank lid	•	•	•
Flexible hose for fast water filling	•	•	•
Water level indicator	•	•	•
Self-levelling splash guards	•	•	•
Elastic net as object holder	•	•	•
<b>Safety</b>			
Emergency stop	•	•	•
Automatic parking brake	•	•	•
Antiskid wheels	•	•	•
Die-caste aluminum frame	•	•	•

OPTIONAL	Versa 55BT	Versa 65BT	Versa 65BTS
CB (On-board Battery Charger)	•	•	•
CDS (Comac Dosing System)	•	•	•
CFC (Comac Fleet Care)	•	•	•
Fast filling system	•	•	•
Tool-holder hook	•	•	•
Kit for cleaning accessories	•	•	•
PM (Pressure monitoring)	•	•	•
Antibacterial tanks	•	•	•
Easy Clean	•	•	•

TECHNICAL DESCRIPTION		Versa 55BT	Versa 65BT	Versa 65BTS
Solution tank	l/gal	62/16,4	62/16,4	62/16,4
Recovery tank	l/gal	66/17,4	66/17,4	66/17,4
Detergent tank capacity (CDS)	l/gal	3/0,79	3/0,79	3/0,79
Voltage and nominal power	V/W	24/1415	24/1415	24/1415
Working width	mm/inch	560/22	655/26	657/26
Squeegee width	mm/inch	800/31,5	800/31,5	800/31,5
Working capacity up to	sq.m/h/sqft/h	1960/21097	2295/24703	2300/24756
Disc brush	(n.) mm/inch	(2) 290/11,4	(2) 340/13,4	-
Cylindrical brushes	(n.) mm/inch	-	-	(2) 130x610/0,42x2
Debris hopper capacity	l/gal	-	-	4/1
Brush pressure	Kg/lbs	25/55,1	30/66,1	30/66,1
Brush pressure (PM version)	Kg/lbs	25-35/55,1-77,1	30-40/66,1-88,2	30-35/66,1-77,1
Brush motor	V/W	24/400 (2)	24/400 (2)	24/400 (2)
Brush revolution/orbital	rpm	240	240	580
Vacuum motor	V/W	24/420	24/420	24/420
Suction vacuum	mbar	124	124	124
Traction	-	aut.	aut.	aut.
Traction motor	V/W	24/180	24/180	24/180
Forward speed	Km/h	0÷3,5	0÷3,5	0÷3,5
Battery compartment dimensions (LxHxI)	mm/inch	350x285x355/13,7x11,2x13,9	350x285x355/13,7x11,2x13,9	350x285x355/13,7x11,2x13,9
Max gradient at full load	%	10	10	10
Batteries (n.)	V/Ah C5	Gel 12/112 (2) Wet 12/110 (2)	Gel 12/112 (2) Wet 12/110 (2)	Gel 12/112 (2) Wet 12/110 (2)
Batteries weight	Kg/lbs	76/167,5	76/167,5	76/167,5
Machine dimensions (LxHxI)	mm/inch	1190x1050x620/ 46,8x41,3x24,4	1220x1050x695/ 48x41,3x27,4	1154x1050x735/ 45,4x41,3x28,9
Machine weight (without batteries)	Kg/lbs	92/202,8	95/209,4	137/302



COMAC S.p.A. Via Maestri del Lavoro, 13 - 37059 Santa Maria di Zevio - Verona - ITALY  
Tel. 045 8774222 - Fax 045 8750303 - com@comac.it  
Organisation certified by Q.C.B. Italia ISO 9001:2008, ISO 14001:2015, OHSAS 18001:2007

