



Optix® integrated dispensing system secures the link between the chemical dosing device and its dispensing container.



Aperture® is an irremovable bottle closure, essential for the safe and controlled use of chemical concentrates.



Irremovable Cap

Aperture® Irremovable Cap controls the safe use and cost of chemicals for the consumer, while securing the commercial value of these chemicals for suppliers.

Eliminates:

- ❌ Misuse
- ❌ Waste
- ❌ Theft



www.sanserv.com





Integrated Chemical Dispensing

Optix® with Aperture® establishes a secure connection between the container and chemical dosing device, ensuring secure integration.

- ✓ Simple
- ✓ Secure
- ✓ Discrete

www.sanserv.com



PATENT PENDING: PCT/GB2017/000150

Managed Control

The simple low cost solution controls the safe use and cost of chemicals for the consumer, while securing the commercial value of these chemicals for suppliers.

1 Irremovable Cap

2 Lockable Arm

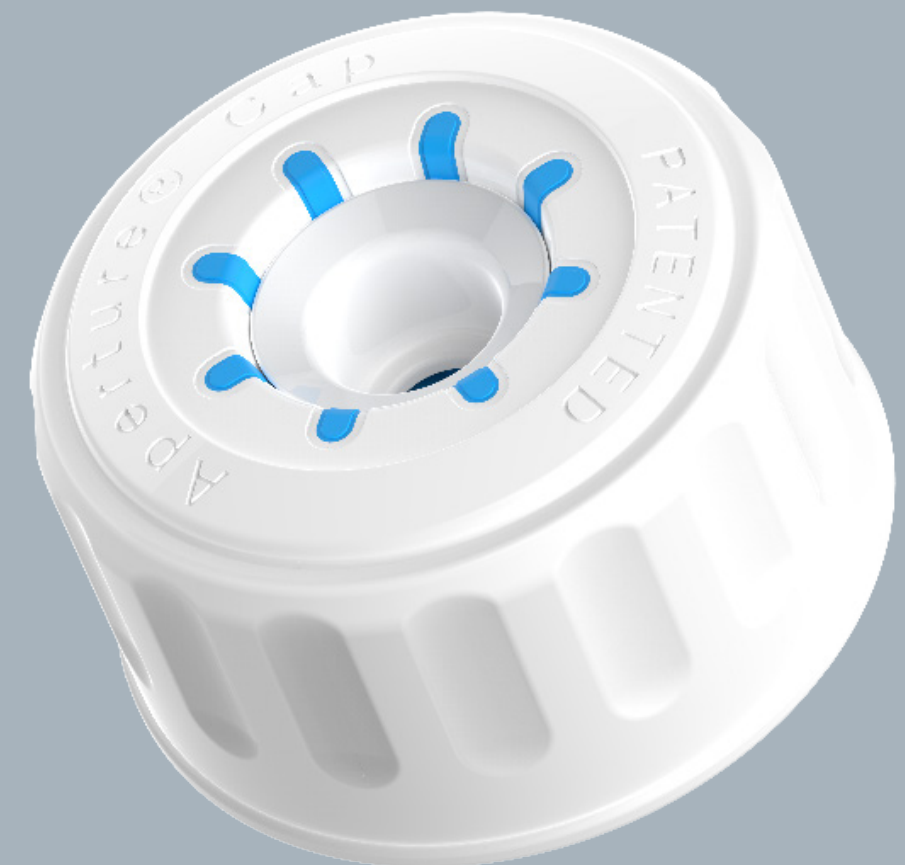
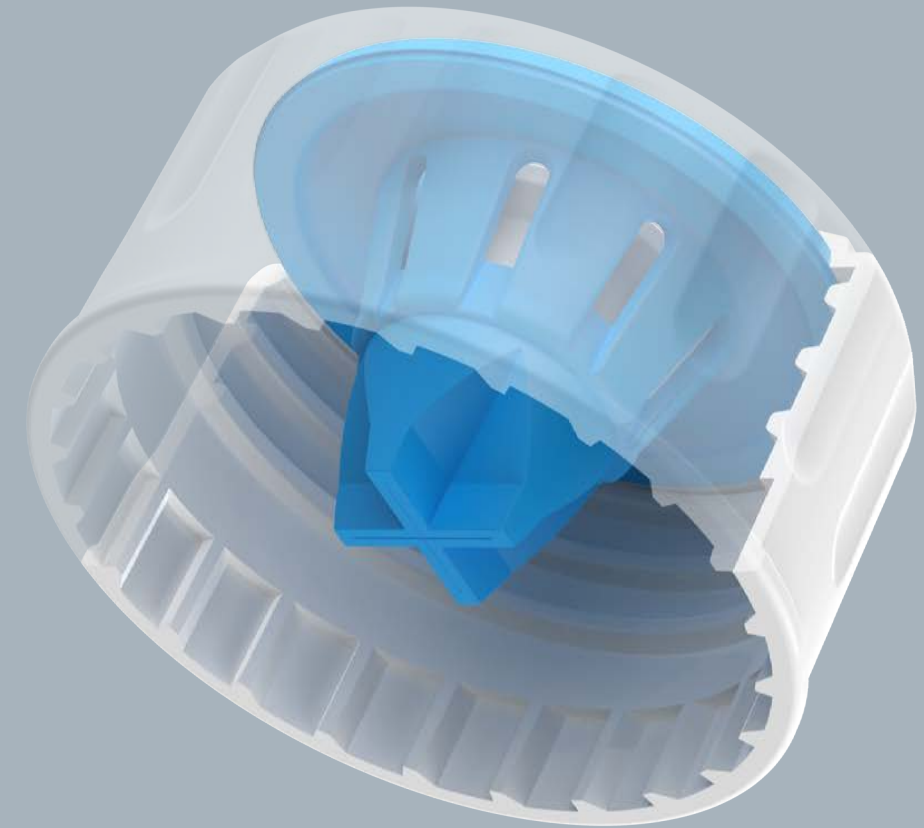
3 Bespoke Keyway



Irremovable Cap

Using an irremovable container cap forces the use of a controlled dispensing method, ensuring the safe handling of liquids.

- 1 Colour Coded
- 2 Safe Handling
- 3 Health And Safety
- 4 Lowers Cost



PATENT NO: GB2513840



Open-Loop Systems

Everyday dosing systems fail to provide a closed loop container dispensing arrangement to safeguard against unrestricted methods of use.



Closing the Loop

OPTIX® solves this problem.

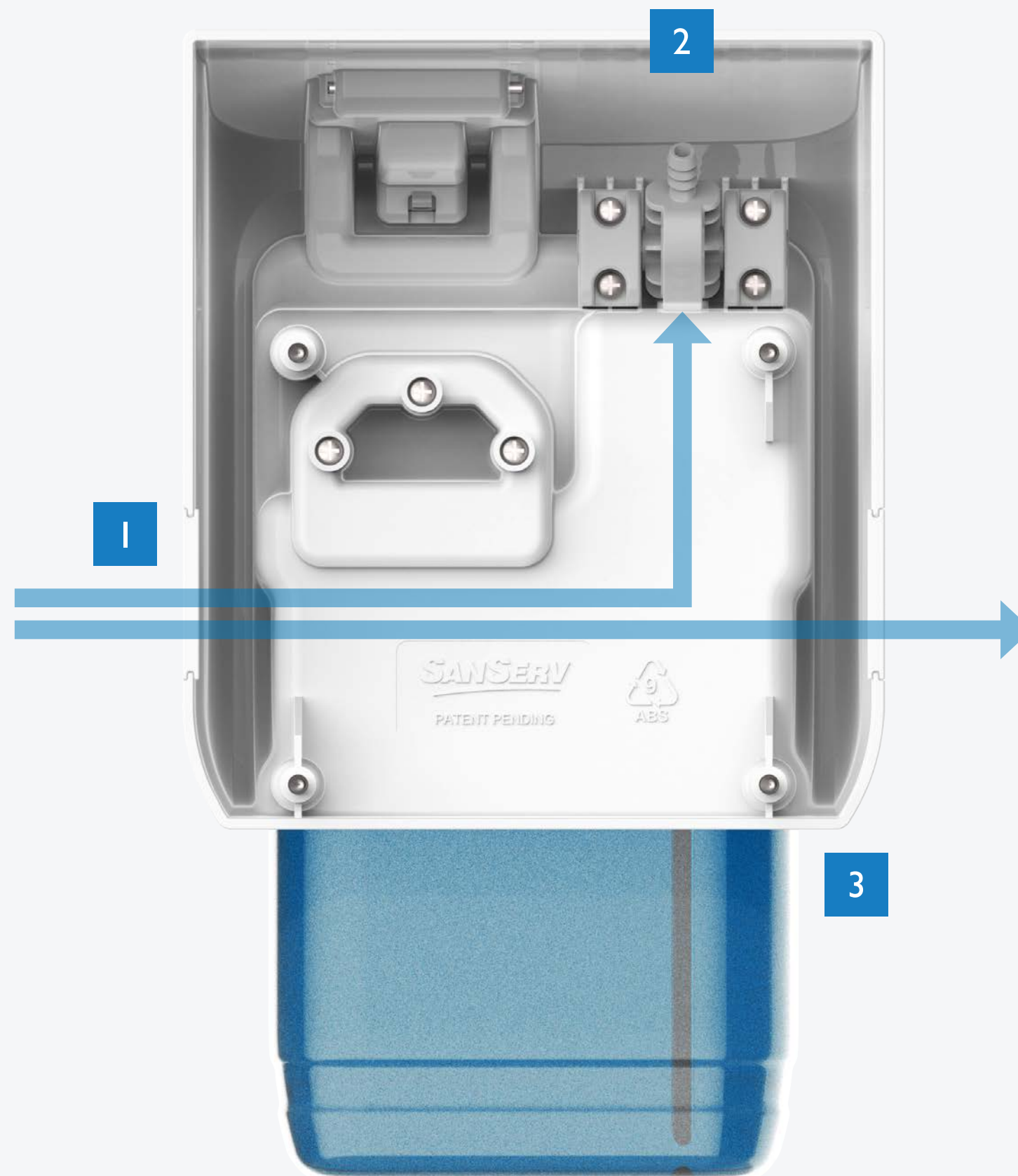


Modern & Tidy

Optix® is easily installed with new or existing dosing equipment from any of the leading Chemical Dispenser / Dosing Brands.

Universal / Retrofit / Easy

- 1** Tube routing channels
- 2** Tube attachment point
- 3** Wall fixing points



Lock-Out System

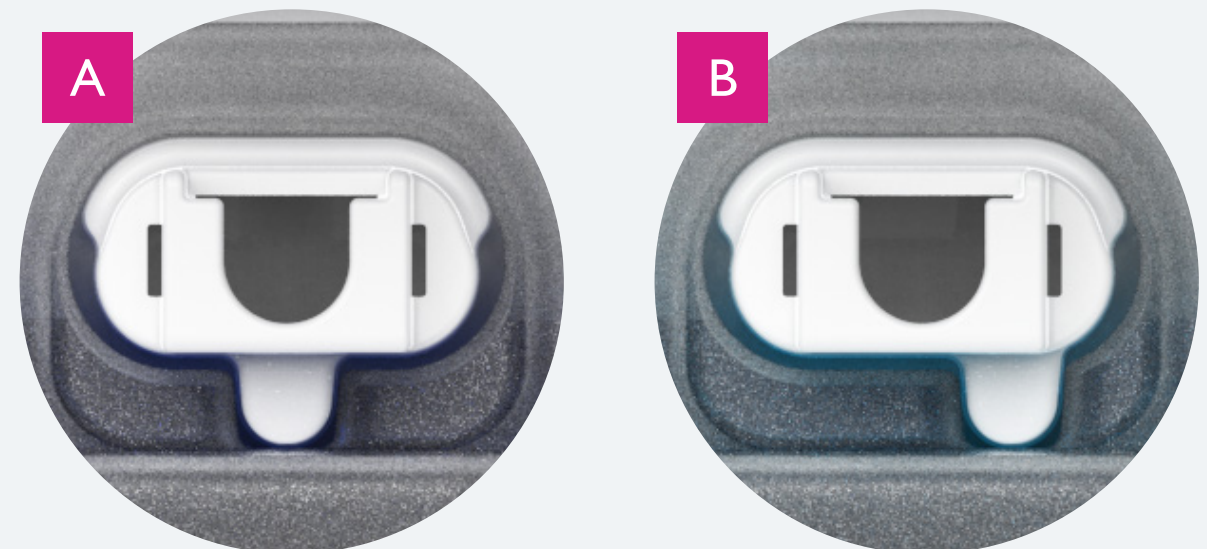
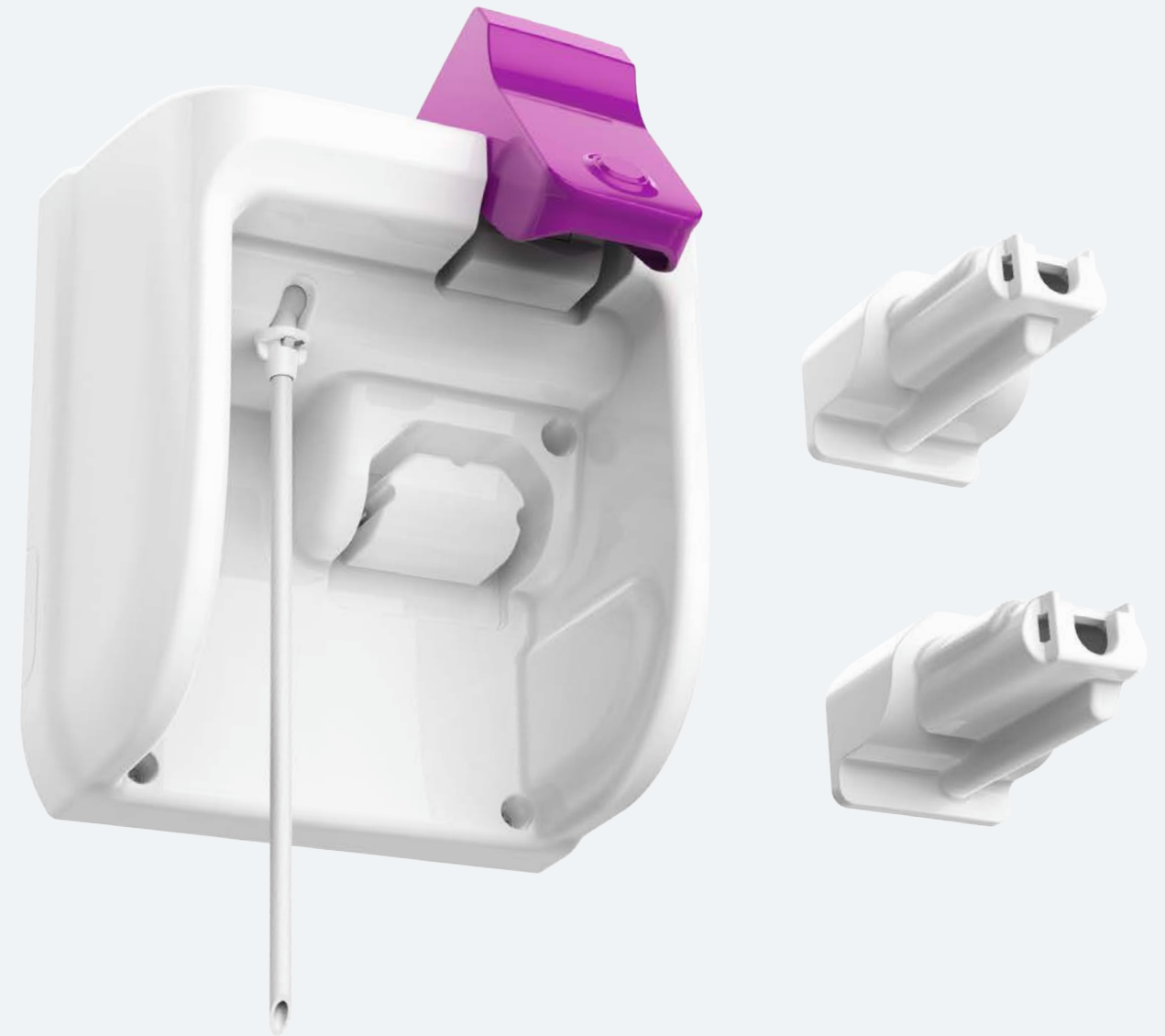
Optix® allows for integration with specified dispensing container systems, resulting in exclusivity and commercial advantage.

- ✓ Bespoke Design
- ✓ Guarantees Sales

A Shaft example 1 (central key)

B Shaft example 2 (far-right key)

Patented Control



Proprietary Bottles

Customised bottle and handle shaft options assure an automated repeat ordering solution, enhancing sales growth.

Secures guaranteed chemical sales with a bespoke keyed bottle and wall unit system.

1 Disassembled shaft and bottle.

2 Assembled unit with bottle.



Adaptable

Chemical bottles fitted with the Aperture cap are compatible with all standard pump types, including:

Manual / Automatic / Peristaltic



