



vega



Vega: the scrubbing machine with a simple yet extremely robust character

Comac quality focuses on essentials with Vega: ease of use, robustness and functional design make the range perfect for work even in the most difficult and dirty conditions by combining the most advanced technology with sturdy, functional design.

Ideal for maintenance and deep cleaning of large spaces, Vega is available as a scrubbing version with 65, 75 and 85 cm working-width disc brushes (BT), a sweeping version with 70 cm working-width cylindrical brushes (BTS) and an orbital version with 70 cm working-width pad (BTO).

Vega is an example of dynamic design in harmony with practical features characterized by compact dimensions ideal for any situation: from industrial or logistics sectors to health-care facilities or large-scale retailing.

THE ADVANTAGES OF VEGA

Maximum performance levels thanks to the advantages Vega can offer:

- It is an example of Comac's philosophy in designing and building robust, practical and easy to use scrubbing machines.
- Power and versatility combine in a scrubbing machine ensuring great autonomy and excellent cleaning performances in a

manoeuvrable machine.

- Designed specifically for the people who will use it, this scrubbing machine is built with the utmost care and attention to quality.
- Equipped with cutting-edge connectivity and safety systems, it transforms simple daily cleaning operations into an extraordinary application experience.
- It is equipped with an electric brake that is automatically activated if the machine stops, operating as a parking brake, so ensure that cleaning operations are extremely safe for the operator.
- The brush head, the squeegee attachment and the frame are all in die-cast aluminum, making Vega extremely robust and reliable over time, as well as being lightweight to enhance manoeuvrability and comfort during use.
- The self-leveling splash guards on the disc versions also adapt automatically to uneven floors to keep water inside the work area and avoid splashes.
- Driving is user-friendly, controls are clear and the display means that scrubbing machine information is accessible at a simple glance in an understandable, direct and easy to read manner.
- Full accessibility to components for easier maintenance operations.
- Spray & Suction Tool (SST) - an optional accessory which, thanks to the spray gun and the vacuum wand, ensures effective cleaning even in those areas the scrubbing machine is unable to reach.



THE MODELS

Vega 65/75/85 BT
Scrubbing versions with
two disc brushes
Working width: 650/750/850 mm

Vega 70 BTS
Scrubbing-sweeping version with
cylindrical brush
Working width: 700 mm

Vega 70 BTO
Orbital version with pad
Working width: 700 mm

Maximum performance while saving resources and controlling consumption

Comac's most important objectives include the development and realization of products that are as environment-friendly as possible. In this context, special emphasis is given to the technologies implemented on Vega to make it a scrubbing machine with a strong focus on safeguarding resources and reducing waste.

ECO FUNCTION

Only one button to reduce energy consumption and noise level. It is an ideal working setting for maintenance cleaning and to use the machine in sensitive or frequented environments.



CDS - COMAC DOSING SYSTEM

Separate water and detergent management

Vega can be equipped on request with CDS (Comac Dosing System) for the separate management of water and detergent, that allows to increase or reduce their flow, according to the type of dirt to clean, thus avoiding wastes. It reduces cleaning solution consumption by up to 50%.



SSC – SOLUTION SMART CONTROL

Vega can be equipped with an SSC (Solution Smart Control) system enabling intelligent connection of the solution pump to the drive motor. This means that if the scrubbing machine works at reduced speed, the solution flow automatically decreases; vice versa, if it works at high speed, the flow increases. This system helps reduce waste and save water while always ensuring excellent cleaning performance.



CFC - COMAC FLEET CARE

Vega can be arranged with the equipment needed for fleet management through Comac Fleet Care (CFC). This system that allows the remote control of machines status: if, when and where each machine is operating or if maintenance is needed, to let you promptly intervene avoiding machine downtimes and unexpected costs for extraordinary maintenance.



STOP&GO

When the machine is temporarily idle, the solution flow is interrupted, the brushes are halted and the brush head is automatically lifted off the floor, with no need for operator intervention. So that consumptions are optimized and wastes reduced. Pressing the forward movement button resets the functions that were previously activated.



PM - PRESSURE MONITORING

System for monitoring the pressure on the brushes

Monitors the power dispensed by the brush motors in order to guarantee maximum effectiveness on any type of flooring.

Self-levelling splash guards for better cleaning performance (Vega 65-75-85).



REFERENCE SECTORS



Industrial



Cleaning
companies



Health



Public



Sports



Automotive



Large-Scale
Retail Trade



Transport

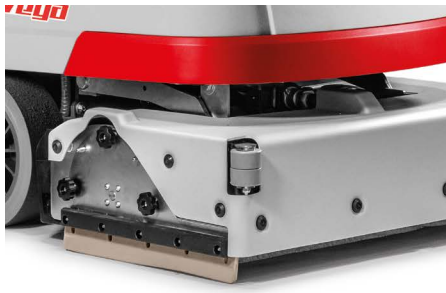


Logistics

Optimal results on any type of floor



The brush head with disc brushes is extremely versatile: it adapts to all types of floor and easily removes stubborn dirt.

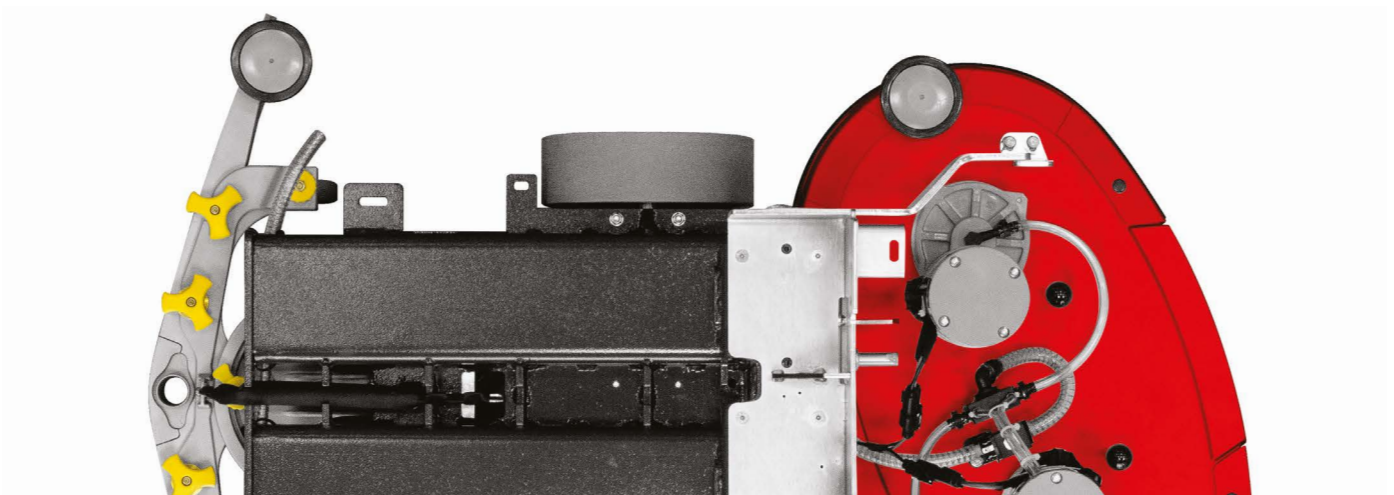


The brush head with cylindrical brushes combines scrubbing and sweeping actions for effective cleaning of floors with small, solid residues. The debris hopper on the base can be removed very easily for emptying.



The orbital brush head can be used to clean various types of floor. It ensures perfectly uniform cleaning even on the sides of the brush head flush with the wall and in corners. In addition, it can work effectively even without the use of chemicals in many situations.

The frame, the squeegee mount and the brush head are made out of die-cast aluminum, that makes them robust and shock proof.



Vega achieves excellent drying performance to dry floors immediately. For more difficult situations, it can be equipped with the powerful **3-stage vacuum motor**.

The constant pressure on the brushes ensures optimal results on any type of floor.

Moreover, the **PM (Pressure Monitoring)** versions of Vega have a system that controls the power supplied by the brush motors to ensure maximum efficiency on any type of floor.

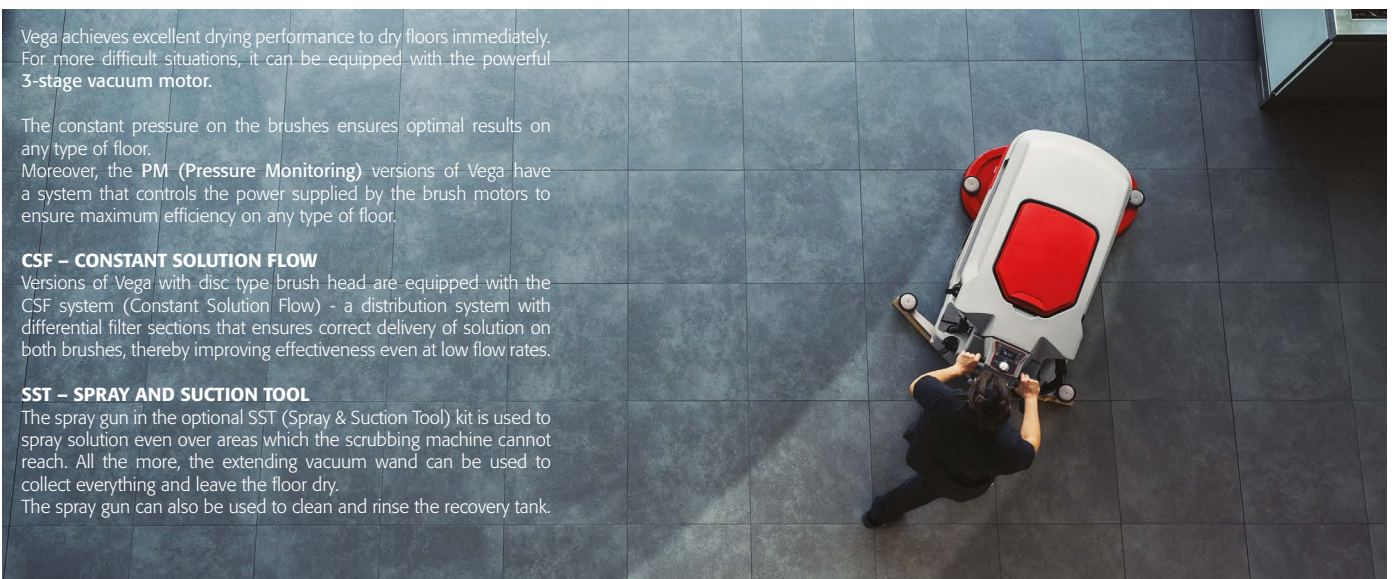
CSF – CONSTANT SOLUTION FLOW

Versions of Vega with disc type brush head are equipped with the CSF system (Constant Solution Flow) - a distribution system with differential filter sections that ensures correct delivery of solution on both brushes, thereby improving effectiveness even at low flow rates.

SST – SPRAY AND SUCTION TOOL

The spray gun in the optional SST (Spray & Suction Tool) kit is used to spray solution even over areas which the scrubbing machine cannot reach. All the more, the extending vacuum wand can be used to collect everything and leave the floor dry.

The spray gun can also be used to clean and rinse the recovery tank.



VEGA'S TECHNOLOGIES



The details that make Vega so easy and reliable



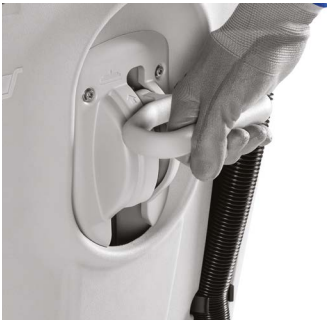
The Vega range is equipped with a new digital control panel with an even clearer and easier to use display to view information and set operating parameters intuitively and quickly. The practical knob on the instrument panel is used to increase or decrease speed according to operating needs. The safety button located under the instrument panel is used to stop the machine immediately in the event of an emergency.



The solution tank filler hose can be connected directly to any water tap, thus allowing the machine to be quickly refilled at any location. Vega can also be equipped with the Fast Filling System, a simple device that allows rapid filling with clean water even without operator supervision.



The level in the solution tank is always under control, thanks to an indicator that results useful when filling the tank with water and during work, to know when you need to stop to empty the recovery tank.



The squeegee lifting system comprises an ergonomic die-cast aluminum handle and a sturdy, durable steel chain.



The brush head is lifted and lowered through a comfortable pedal (version without PM - Pressure Monitoring).



The optional on-board battery charger means you can recharge Vega even more quickly and easily.



The side elastic net can be used to carry additional cleaning tools that allow to complete the cleaning operations (optional).

PROPER DAILY MAINTENANCE KEEPS SCRUBBING PERFORMANCE CONSTANT OVER TIME

Yellow color-code identifies the parts involved in daily maintenance. At the end of the shift, the operator can easily and quickly find what parts have to be sanitized, without wasting time



Rubber blades replacement or rotation are carried out in few seconds without any tools.



Full access to components makes easier both regular and extraordinary maintenance.



The scrubbing-sweeping version (BTS) is equipped with a debris hopper that can be easily emptied taking it out from the right side

CERTIFICATIONS



| STANDARD EQUIPMENTS | Vega 65BT | Vega 75BT | Vega 85BT | Vega 70BTO | Vega 70BTS |
|---|------------------|------------------|------------------|------------------|------------------|
| Comfort | | | | | |
| Hour meter | • | • | • | • | • |
| Eco Mode | • | • | • | • | • |
| Electronic control panel with diagnostics | • | • | • | • | • |
| Brush head lifting | Manual/Auto (PM) | Manual/Auto (PM) | Manual/Auto (PM) | Manual/Auto (PM) | Manual/Auto (PM) |
| Ergonomic squeegee handle | • | • | • | • | • |
| Speed selector | • | • | • | • | • |
| Squeegee rubber blades usable on 4 sides | • | • | • | • | • |
| Color-coded parts for easy maintenance | • | • | • | • | • |
| Flexible hose for fast water filling | • | • | • | • | • |
| Water level indicator | • | • | • | • | • |
| Self-leveling splash guard | • | • | • | • | • |
| CSF (Constant Solution Flow) | • | • | • | - | - |
| Safety | | | | | |
| Emergency stop | • | • | • | • | • |
| Automatic parking brake | • | • | • | • | • |
| Antiskid wheels | • | • | • | • | • |
| Die-caste aluminum frame | • | • | • | • | • |

| OPTIONALS | Vega 65BT | Vega 75BT | Vega 85BT | Vega 70BTO | Vega 70BTS |
|--------------------------------|-----------|-----------|-----------|------------|------------|
| CB (on board battery charger) | • | • | • | • | • |
| CDS (Comac Dosing System) | • | • | • | • | • |
| SSC (Solution Smart Control) | • | • | • | • | • |
| CFC (Comac Fleet Care) | • | • | • | • | • |
| CSF (Constant Solution Flow) | • | • | • | - | - |
| SST (Spray Solution Tool) | • | • | • | • | • |
| Cleaning accessory support kit | • | • | • | • | • |
| PM (Pressure monitoring) | • | • | • | • | • |
| 3 stages vacuum motor | • | • | • | • | • |
| Fast filling system | • | • | • | • | • |

| TECHNICAL DESCRIPTION | | Vega 65BT | Vega 75BT | Vega 85BT | Vega 70BTO | Vega 70BTS |
|--|-------------------|---------------------------------|---------------------------------|---------------------------------|---------------------------------|---------------------------------|
| Solution tank | l/gal | 75/16,5 | 75/16,5 | 75/16,5 | 75/16,5 | 75/16,5 |
| Recovery tank | l/gal | 115/25,3 | 115/25,3 | 115/25,3 | 115/25,3 | 115/25,3 |
| Detergent tank capacity (CDS) | l/gal | 3/0,65 | 3/0,65 | 3/0,65 | 3/0,65 | 3/0,65 |
| Voltage and nominal power | V/W | 24/1522 | 24/1720 | 24/1720 | 24/1400 | 24/1622 |
| Working width | mm/inch | 665/26,18 | 765/30,11 | 850/33,46 | 710/27,95 | 640/25,1 |
| Squeegee width | mm/inch | 785/30,9 | 885/34,8 | 985/38,7 | 885/34,8 | 885/34,8 |
| Working capacity up to | sq.m./h / sq.f./h | 2816/30311 | 3289/35402 | 3655/39342 | 3053/32862 | 2752/29622 |
| Disc brushes | (no.) mm/inch | (2) 340/13,4 | (2) 400/15,7 | (2) 440/17,32 | - | - |
| Cylindrical brushes | (no.) mm/inch | - | - | - | - | (2) 180-615/7,1-24,2 |
| Rectangular pad | (no.) mm/inch | - | - | - | (1) 710x355/28x14 | - |
| Debris hopper capacity | l/gal | - | - | - | - | 5/1,1 |
| Brush pressure | kg/lbs | 40/88,2 | 40/88,2 | 40/88,2 | 40/88,2 | 40/88,2 |
| Brush pressure (PM version) | kg/lbs | 53/116,8 | 53/116,8 | 53/116,8 | 45/99,2 | 53/116,8 |
| Brush motor | V/W | 24/400 (2) | 24/500 (2) | 24/500 (2) | 24/680 (1) | 24/450 (2) |
| Brush revolution/orbital | rpm | 240 | 140 | 140 | 2000 | 605 |
| Suction motor | V/W | 24/422 | 24/422 | 24/422 | 24/422 | 24/422 |
| Traction | - | aut. | aut. | aut. | aut. | aut. |
| Traction motor | V/W | 24/300 | 24/300 | 24/300 | 24/300 | 24/300 |
| Forward speed | Km/h | 4,3 | 4,3 | 4,3 | 4,3 | 4,3 |
| Battery compartment dimensions (Lxhxw) | mm/inch | 525x385x325 20,6x15,1x12,8 | 525x385x325 20,6x15,1x12,8 | 525x385x325 20,6x15,1x12,8 | 525x385x325 20,6x15,1x12,8 | 525x385x325 20,6x15,1x12,8 |
| Batteries (N.) | V/Ah C5 | 6/210 (4) | 6/210 (4) | 6/210 (4) | 6/210 (4) | 6/210 (4) |
| Batteries weight | kg/lbs | 136/299,8 | 136/299,8 | 136/299,8 | 136/299,8 | 136/299,8 |
| Machine dimensions (Lxhxw) | mm/inch | 1495x1055x785 58,5x41,5x30,9 | 1515x1055x885 59,6x41,5x34,8 | 1545x1055x985 59,6x41,5x38,8 | 1390x1055x885 54,7x41,5x34,8 | 1475x1055x885 58,1x41,5x34,8 |
| Machine weight (without batteries) | kg/lbs | 169/372,5 | 178/392,4 | 187/412 | 187/412 | 180/396,8 |



COMAC S.p.A. Via Maestri del Lavoro, 13 - 37059 Santa Maria di Zevio - Verona - ITALY
Tel. 045 8774222 - www.comac.it - com@comac.it

Comac S.p.A. org. cert. ISO 9001:2015, ISO 14001:2015, ISO 45001:2018, SA 8000:2014

