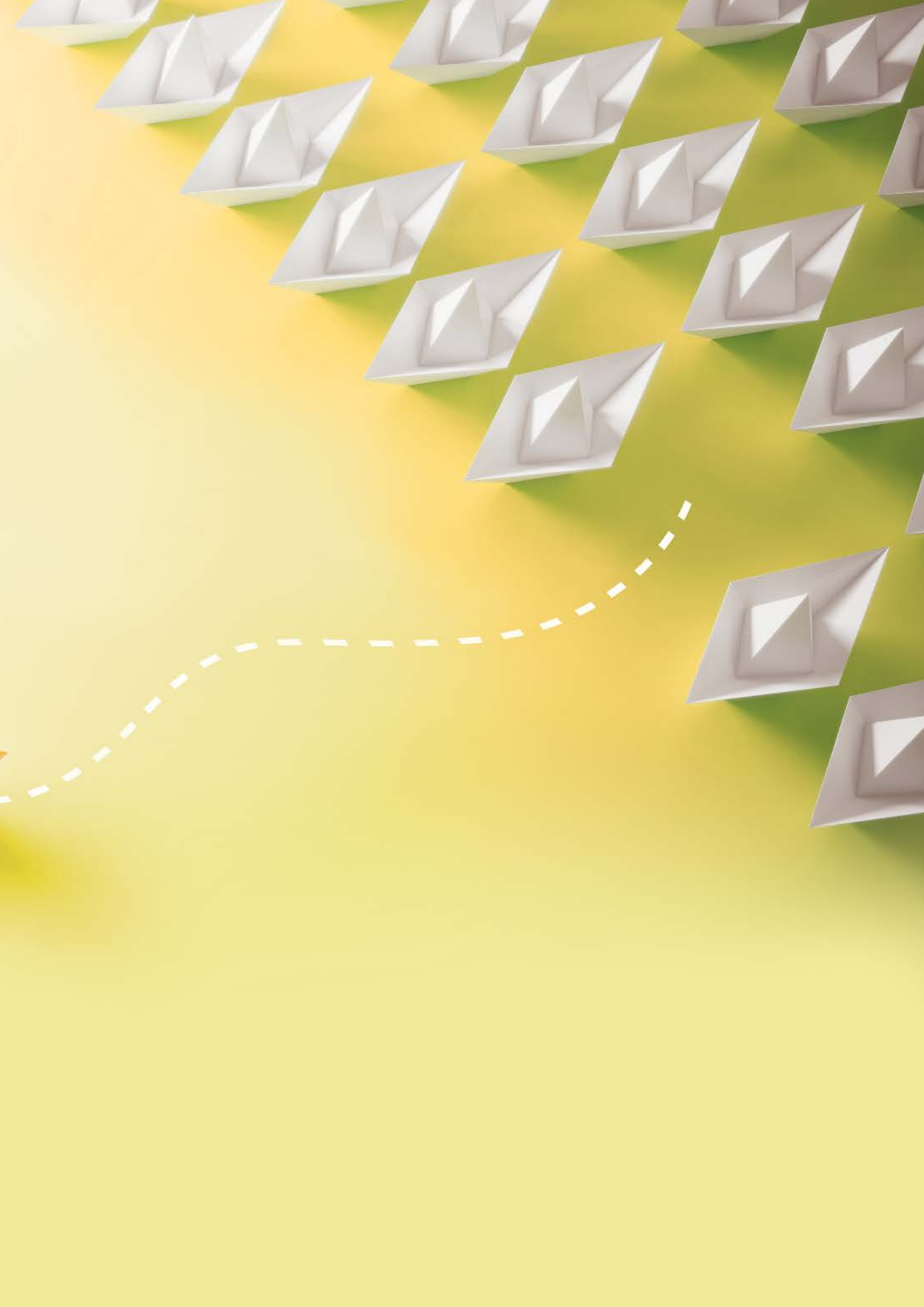


# 02



Change the way  
you wash and  
dry your hands

**HAND WASHING AND  
DRYING UNITS**



All-in-One hand washing and drying units integrated into the washbasin itself, providing an enjoyable hand hygiene experience.

## HAND WASHING AND DRYING UNITS

- » The All-in-One hand washing and drying units feature an automatic soap dispenser, water tap and hand dryer in the same washbasin so you don't have to move around in the bathroom.
- » Designed with aesthetics and performance in mind, our All-in-One hand washing and drying units offer pure elegance and efficiency. Their smart design, with clean lines and elegant curves, and their great functionality, break all current design and functional conventions.
- » The All-in-One system eliminates the need to move around to wash and dry hands in the bathroom, prevents water accumulation on the floor, saves space and reduces the time needed to wash and dry hands.
- » Installed either on the wall or on the washbasin itself, the All-in-One system can be supplied as a set or individually as stand-alone products.
- » The design, aesthetics and functionality of the All-in-One system allows designers to create minimalist, functional and safe spaces.


























































































































































































































































































































































# Hand washing and drying units

MEDICLINICS ALL-IN-ONE

HAND DRYER +  
SOAP DISPENSER  
AND WATER TAP

**NEW**



**M092A**  
Hand dryer with sensor

MATERIAL: **chrome-plated brass**  
FINISH: **bright**

**AVAILABLE IN OTHER FINISHES.  
REQUEST US!**

**NEW**



**GAJ002AC**  
Water tap and soap dispenser with sensor

MATERIAL: **chrome-plated brass**  
FINISH: **bright**

**AVAILABLE IN OTHER FINISHES.  
REQUEST US!**

CODE OF THE COMPLETE SET: UCM092A

## COMPONENTS AND MATERIALS

### M092A · GAJ002AC

Hand dryer and water tap + soap dispenser, both made of chrome-plated brass.

An IR sensor allows touch-free operation.

Effective sensor detection range of 5-25 cm.

#### M092A

- High-speed automatic hand dryer for worktop mounting, with the hand dryer unit concealed under the worktop or behind the wall.
- Equipped with HEPA filter media that removes most of the particulate matter present in the air.
- Its class F high-pressure brushed motor, with adjustable power, provides a maximum air output speed of 400 km/h.
- Dries hands in 10–15 seconds.
- 400 W heating element with "On/Off" switch.
- One hand dryer per tap.

#### GAJ002AC

- Automatic water tap and soap dispenser for worktop mounting.
- The soap dispenser reservoir and mechanism can be concealed under the worktop or behind the wall.
- The soap dispenser is fitted with an anti-drip valve.
- Adjustable soap application between 0.5 ml and 2 ml (0.5-1.0-1.5-2.0 ml) to reduce soap wastage.
- Can be connected to mains power or batteries (not included).

## TECHNICAL SPECIFICATIONS

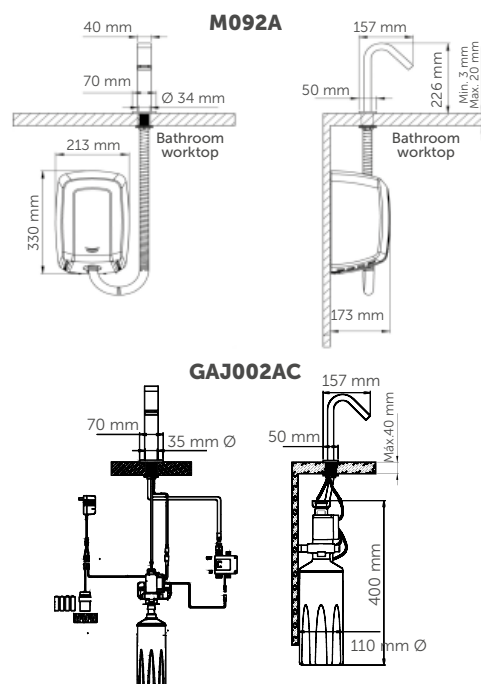
### M092A · GAJ002AC

#### M092A

Voltage / Frequency	220-240 V 59-60 Hz
Total power	420-1,500 W
Power consumption	3.2-6.4 A
Heating element power	400 or 0 W (Heating element ON/OFF)
Drying time	10-15 s
Air speed	190-400 km/h
Sound pressure (at 2 m)	67-72 dBA
Level of protection	IP23

#### GAJ002AC

Water inlet pressure	0.5-0.8 bar
Soap reservoir capacity	1.5 l
Quantity dispensed per pump	0.5-2.0 ml
Suitable soaps	Soaps with a viscosity of 100-3,500 cP and a neutral pH



# Hand washing and drying units

MEDICLINICS ALL-IN-ONE

HAND DRYER +  
SOAP DISPENSER +  
WATER TAP

**NEW**




**M093A**  
Hand dryer with sensor

MATERIAL: **AISI 304 stainless steel**  
FINISH: **bright**

AVAILABLE IN OTHER FINISHES.  
REQUEST US!

**NEW**



**DJ003AC**  
Soap dispenser with sensor

MATERIAL: **chrome-plated brass**  
FINISH: **bright**

AVAILABLE IN OTHER FINISHES.  
REQUEST US!

**NEW**



**GA003AC**  
Tap with sensor

MATERIAL: **chrome-plated brass**  
FINISH: **bright**

AVAILABLE IN OTHER FINISHES.  
REQUEST US!

CODE OF THE COMPLETE SET: UCM093A

## COMPONENTS AND MATERIALS

### M093A · DJ003AC · GA003AC

Sensor-activated hand dryer + electronic tap + electronic soap dispenser, made of chrome-plated brass and stainless steel, with bright finish and designed for wall mounting.

The hand dryer, water tap and soap dispenser are designed to work together as a hygienic and efficient non-contact system.

#### M093A

- High-speed automatic hand dryer tap for wall mounting.
- Dries hands in 10-15 seconds with a pleasantly warm airflow.
- Equipped with HEPA filter media that removes most of the particulate matter present in the air.
- Class F high-pressure brushed motor, with adjustable power, providing a maximum air output of 400 km/h.
- 400 W heating element with "On/Off" switch
- One hand dryer per tap.

#### DJ003AC

- Automatic soap dispenser tap for wall mounting.
- Adjustable soap application between 0.5 ml and 2 ml (0.5-1.0-1.5-2.0 ml) to reduce soap wastage.
- Can be connected to mains power or batteries (not included).

#### GA003AC

- Infrared automatic washbasin tap for wall mounting. This solution saves water and allows rational and intelligent use of water resources.
- Touchless operation makes this water tap a hygienic and easy-to-clean option, suitable for any environment.
- Effective sensor detection range of 5-25 cm.

## TECHNICAL SPECIFICATIONS

### M093A · DJ003AC · GA003AC

#### M093A

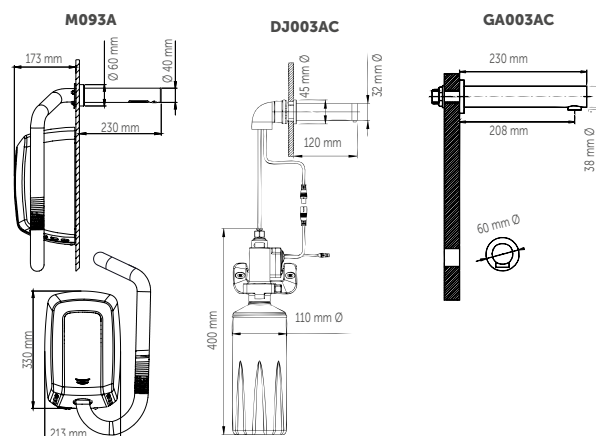
Voltage / Frequency	220-240 V 59-60 Hz
Total power	420-1,500 W
Power consumption	3.2-6.4 A
Heating element power	400 or 0 W (Heating element ON/OFF)
Drying time	10-15 s
Air speed	190-400 km/h
Sound pressure (at 2 m)	67-72 dBA
Level of protection	IP23

#### DJ003AC

Soap reservoir capacity	1.5 l
Quantity dispensed per pump	0.5-2 ml
Suitable soaps	Soaps with a viscosity of 100-3,500 cP and a neutral pH

#### GA003AC

Voltage (transformer)	220-240V-50/60Hz
Water inlet pressure	0.5-8 bar
Water flow (at 3 bar)	5.0 l/min
Detection range	5-25 cm
Safety cut-out	60

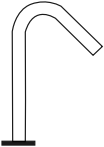




# Hand washing and drying units

MEDICLINICS ALL-IN-ONE

HAND DRYER +  
SOAP DISPENSER +  
WATER TAP

		BASIN MATERIAL		COMPONENTS OF THE UNIT		SOAP DISPENSER CAPACITY
MODEL		AISI 304 stainless steel / satin finish	Chrome-plated brass	Machflow® hand dryer	Automatic soap dispenser	1.5 l
	UCM092		•	•	•	•
	UCM093A	• *	•	•	•	•

\* HAND DRYER TAP M093A.

